

SAMBIAN-NATANGIAN CULTURE RING DECORATION STYLE AS AN EXAMPLE OF COMMUNICATION BETWEEN LOCAL ELITES IN THE BALTIC REGION IN THE LATE ROMAN PERIOD

OLGA KHOMIAKOVA

Abstract

Goods decorated in the Ring Decoration style are prevalent in Sambian-Natangian culture from the early phase of the Late Roman Period. Several types of adornment are known: with single or several hoops, and with a combination of wire and embossed foil. Ring Decoration types can be used as date markers, since they existed at fixed periods in time. Pieces decorated with rings can be assigned to the regions of the Vistula and the Baltic Sea islands, and can be considered evidence of contacts between the elites of Sambia, Scandinavia and Germania Libera.

Key words: jewellery, Ring Decoration style, Sambian-Natangian culture, tribal elites, Himlingøje horizon, Haßleben-Leuna group.

Introduction

Jewellery is traditionally considered to be one of the main signs of connections between tribal elites in the Baltic region. Among them are goods decorated in the so-called Ring Decoration (or *Ringgarnitur*) style.¹ They are common in Sambian-Natangian culture,² and are supposed to be one of its characteristic features in the Late Roman Period (Okulicz 1973, p.422ff; Nowakowski 1996, p.57; Andrzejowski, Cieśliński 2007, p.304ff; Kulakov 2004, p.36). Crossbow fibulae (types A210-211, A167) (Almgren 1923, pp.90-99) and *Große Armbrustfibeln* (Åberg 1919, p.14, Fig. 3) neck-rings and pins were ornamented with hoops made of notched wire. Different types of ring decoration determine not only its specificity in West Balt territory, but also serve as chronological markers, reflecting the intensity and the direction of contacts with other tribes. Being part of both ordinary and prestige dress, they can indicate the work of adoption and the significance of elites in this process. This article proposes to analyse specimens furnished with hoops, which could assist in proving these theories.

¹ The Ring Decoration (or *Ringgarnitur*) style was widespread in the *barbaricum*, including Balt territories, from the Early Roman Period. Initially, it originated in Provincial Roman fashion. It is usually represented by goods decorated with wire coils and embossed or granulated elements.

² In literature, Sambian-Natangian culture is also known as Dollkeim-Kovrovo culture (see Nowakowski 1996).

The extraordinary number of fibulae decorated with notched wire from the former East Prussia was first noted by Nils Åberg (1919, map 10), who considered the Sambian Peninsula to be their place of origin, from where they spread. Later, this point of view was shared by Anatoly K. Ambroz (1966, p.67, Table 23) in his investigation of southwest territories of ex-USSR antiquities. Referring to local specimens enriched with coils made of notched wire, another Russian researcher, Vladimir I. Kulakov, emphasises the East Germanic impact on the occurrence of Almgren group VI fibulae in the southeast Baltic. He believes the Ring Decoration style to be a barbarian simplification of a fashion first introduced in the ornamentation of the 'strongly profiled' fibulae of Almgren group V (Kulakov 2005b, p.41).

The morphological features of Sambian specimens form the basis of Åberg's classification. Thus, he considered the three types of crossbow fibulae: the earlier Å1 and Å2 (Åberg 1919, p.14, Figs. 1-2), matching the Almgren A211 and A167 forms dated to period C of Otto Tischler, and *Große Armbrustfibeln* – Å3 (Åberg 1919, p.14, Fig. 3) prevalent in periods C and D. Harri Moora looked at Baltic pieces decorated with wire coils in his study (1938). He not only specified types of fibulae, but also distinguished different styles of ornamentation. The same characteristics were attributed to fibulae from northwest Estonia by Mari-Liis Rothla (2005, p.125ff). H. Moora identified three types of Baltic Ring Decoration style (Fig. 1.1). The first (I) is characterised by three hoops in a group, where the

III

BALT SOCIETIES: AN ATTEMPT TO PENETRATE THE MIST

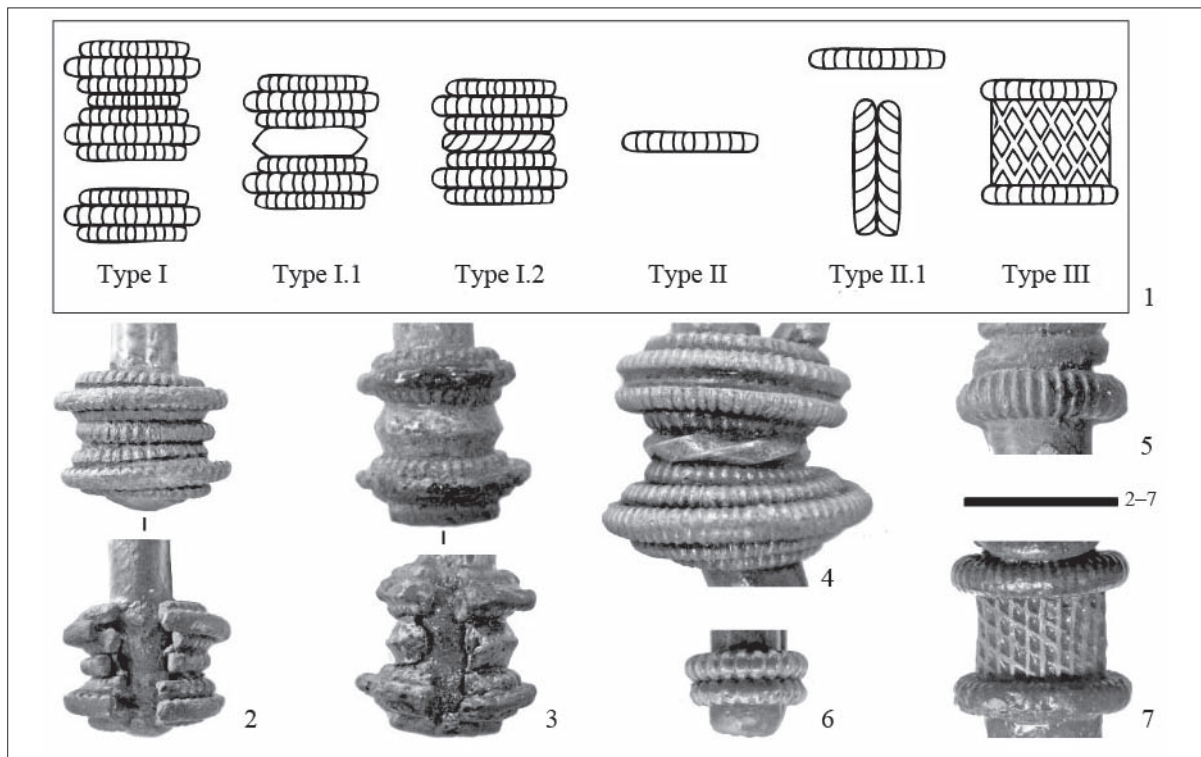


Fig. 1. Ring Decoration of Sambian-Natangian culture: 1 types of Ring Decoration; 2-7 examples of segments (2-3, 5-7 fibulae, 4 neck ring): 2 Alejka 3, grave 76; 3 Gur'evsk, grave 12c; 4 unknown place (from the former Prussia-Museum); 5 Kovrovo, grave 260; 6 Bol'shoje Isakovo, grave 53; 7 former Greibau, stray find (photographs by O. Khomiakova; 2 after Khohlov 2010, Fig. 10).

middle hoop often had the largest diameter. This type has a modification, which is specified by two groups of three rings joined by a small one (Fig. 1.2). The second type (II) is represented by single coils, mostly placed on the bows and knobs of crossbow fibulae (Fig. 1.5). The third (III) is produced by a combination of wire and elements of embossed foil with so-called waffle ornamentation (Moora 1938, p.132ff) (Fig. 1.7).

An analysis of Sambian-Natangian ring decoration

Regarding groups of Sambian ring decoration (Fig. 1.2-7), we should look at variations of these three basic types, which makes their analysis fractional.

The first (I) 'classic' type (Fig. 1.2, 6) can be divided into two subtypes, where two groups of three hoops can be joined by a moulded one (Subtype I.1) (Fig. 1.3), or by a ring made of strip-twisted wire (Subtype I.2) (Fig. 1.4). As a variation of the second group (Subtype II.1), a combination of single rings and soldered strip-twisted wire on the bow can be defined (Fig. 1.1).

The first type (I) (with seven rings in a segment) is typical of crossbow fibulae of Almgren 211 and 167 forms, and is considered to be a typological feature (Almgren

1923, pp.78, 90-99, 241, Table VII. 167; Ambroz 1966, pp.67, 73, Tables 11.8; 12.2-3, 21; 15.27). Thirty-one items of type A211, and 47 items of type A167 of Sambian-Natangian culture have been taken into account (for this, see Appendix I, Fig. 2.1). Neck-rings could also be adorned with groups of wire coils (Bezzenberg-er 1904, p.79, Fig. 97).

Fibulae of type A211 were ornamented with hoops on the head-knob, on the ends of the spring and the foot. Groups of rings were placed on the transitional part between the bow and the foot, and on the junction of the bow and the spring (Fig. 3.1). These fibulae were commonly bimetallic: the bow was made of bronze, the needle, the spring and the bar were made of iron. Only isolated fibulae were made of silver.

Among funeral items (Heydek 1888, Fig. 102; Tischler, Kemke 1902, p.31; Skvorzov 2004/2005, Tables 48.4-5; 52.49-50), fibulae of type A211 occurred in association with three-crossbar fibulae of type A98 and fibulae of type A167 (Almgren 1923, Tables V. 98, VII. 167), D-shaped buckles of types D17, D22 and D30 by Renata Madyda-Legutko (1987, Table IX.17. 22. 30), belt-end fittings of type JII.3 by Klaus Raddatz (1957, p.88. Fig. 2. Table 14. 6-8) and neck-rings with wire-coiled terminals.

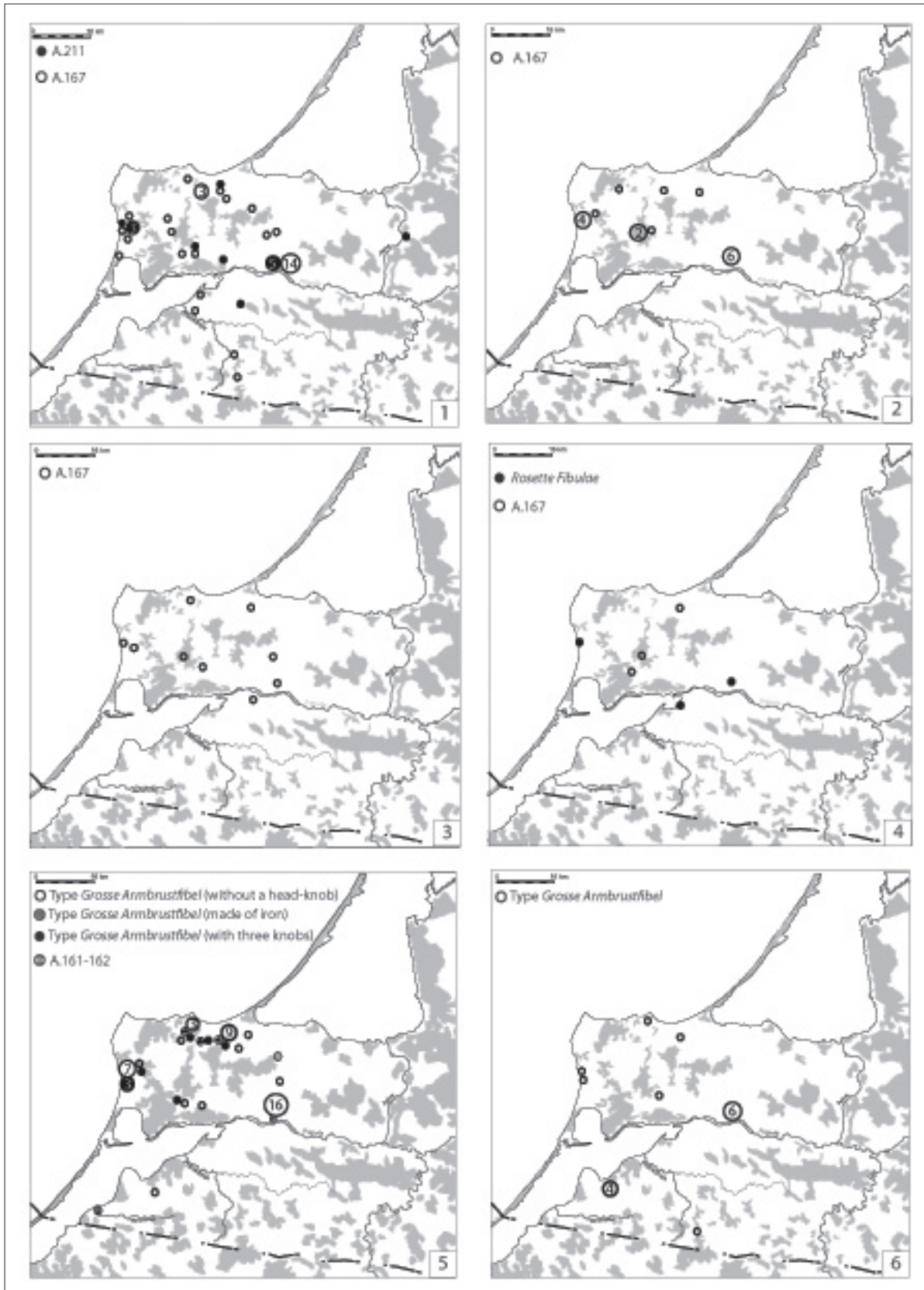


Fig. 2. The distribution of fibulae with different types of Ring Decoration style in Sambian-Natangian culture: 1 Type I (segments with seven rings in a group); 2 Type I (segments with two and three rings); 3 Type I.1; 4 Type I.2; 5 Type II; 6 Type III.

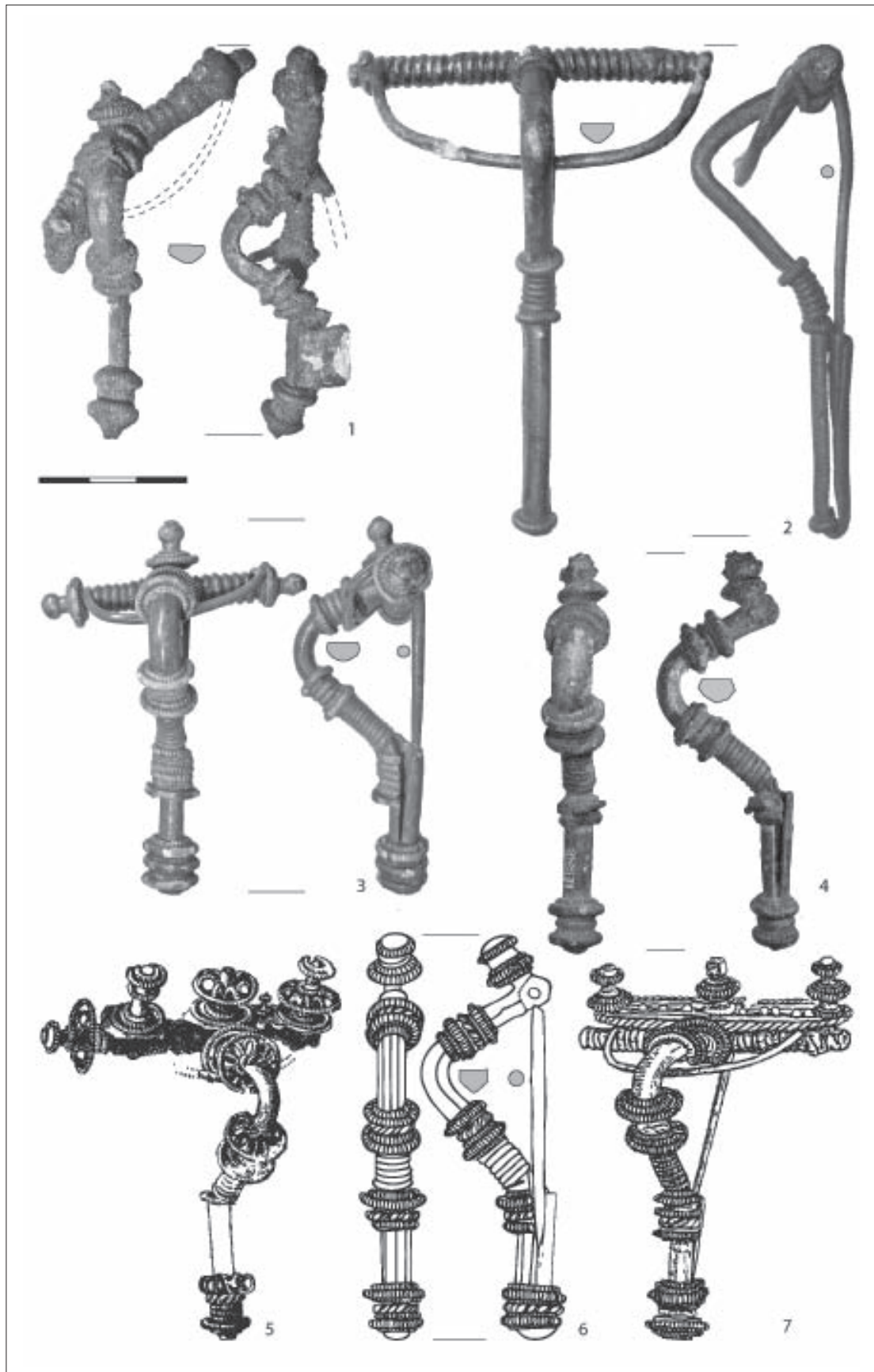


Fig. 3. Fibulae ornamented with Ring Decoration style of Types I-II: 1 Bol'shoe Isakovo, grave 40; 2 Kovrovo, grave 260; 3 Bol'shoe Isakovo, grave 55; 4 Putilovo, stray find PM 14826; 5 Kotel'nikovo; 6 Kovrovo, grave 368; 7 Orekhovo (1-4, 7 bronze; 5-6 bronze and silver; 1-4 photographs by O. Khomiakova; 5 after Åberg 1919, Fig. 10; 6 after Kulakov 2007, p.61, Fig. 213.1; 7 after Gaerte 1929, Fig. 169.g).

Instead of them, fibulae of type A167 were studded by four segments of ring-groups. A supplementary one was placed on the middle part between the bow and the foot towards the wire wrapping (Fig. 3.3). Sambian fibulae of type A167 were made completely of bronze, in the same way as Ring Decoration style.

Specimens of type A167 (Bujack 1888, p.245, Table IX; Skvortsov 2000, Fig. 64; 2001, Figs. 144, 264, 283; 2002, Fig. 78; 2004/2005, pp.128ff, 141ff; Khomiakova 2010a, p.287; Jakobson, Archive) noted with three-crossbar fibulae of 'Masurian' type, A211 and A161–162 fibulae (Almgren 1923, Table IX.211); D-shaped buckles (Madyda-Legutko 1987, Tables VII–IX), belt-end fittings of types JIII.1 and JII.3 (Raddatz 1957, pp.88, 93), belt-shaped and bucket-shaped pendants, and shield bosses of type D1 by Norbert Zieling (Zieling 1989, Tables 14.3; 16.3,4).

The West Baltic pieces of types A211 and A167 are attributed to the 'mature' phase of the Late Roman Period by Kazimierz Godłowski (1970, pp.52–53), or to Phase III of Dollkeim-Kovrovo culture by Wojciech Nowakowski (1996, p.57ff). The represented associations enable us to consider the earliest A211 and A167 fibulae with a 'classic' segment (with seven rings in a group) to appear in Sambian-Natangian culture simultaneously with the C_{1a} period. They became widespread in the C_{1b}–C₂ period.

Fibulae of type A167 enriched with segments of Subtype I.1 are represented by a few specimens (see Appendix I, Figs. 2.3; 3.4). The piece from Sinjavino (formerly Kampischkehmen) known from O. Almgren's plates as an example of type A167 was furnished with such segments (Almgren 1923, pp.78, 241, Table VII. 167). These items should be attributed to the same period. The piece recovered from grave 12 at Gur'evsk (formerly Klein Heide) burial ground (Skvorzov 1995) occurred with type A161–162 fibulae (with three knobs) and a finger-ring of type 40 by C. Beckmann (1969, Table 2.40).

The solitary pieces supplied with segments of Subtype I.2 (Fig. 2.4) from Sambian burial grounds need to be analysed separately. The bronze bow of a fibula from grave 368 at Kovrovo (formerly Dollkeim) was decorated with a combination of silver strip-twisted and notched wire coils (Fig. 3.6). In contrast, the item from grave 58 of the Alejka 3 (formerly Jaugehnen) burial ground with the same ornamentation was made entirely of silver (Khomiakova 2010b, p.136; KOIHM depository).

Extra decorative elements are attended on the fibula from the Orekhovo (formerly Schuditten) burial ground (Fig. 3.7). The bow and the shield on a spring

were trimmed with a combination of notched and strip-twisted wire. This variety occurred on a fibula of type A167 discovered at Kotel'nikovo (formerly Warengen) (Fig. 3.5), which is considered an exceptional specimen in Sambian-Natangian culture. It differs by the hoops of strip-twisted wire soldered on a bow and a spring. Strip-twisted wire was also used in the ornamentation of neck-rings. Two silver items with wire-coiled ends from the former Prussia-Museum's collection are known (see Appendix I; Fig. 1.4).

The group of artefacts with ornate segments of Type II includes fibulae of type *Große Armbrustfibel* (66 items) and fibulae of type A161–162 with three knobs (three items) (Fig. 2.5). Single wire hoops as an ornate element could be embodied in the decoration of neck-rings (see Appendix I).

The largest group of Sambian *Große Armbrustfibeln* supplied with single coils is characterised by the large-size (nine to 11 centimetres long) elbow bow with a pentahedral (or trihedral) cross-section, faceted tendril foot and tension of rectangular form. The length of the spring is equal to the bow length. Only the ends of the spring were studded with knobs, although the bow-head was simple. Fibulae of *Große Armbrustfibeln* type are usually made of bronze. Several examples of silver rings are known. The arrangement of wire segments on a bow was similar to the fibulae of type A167 (Fig. 3.2).

Fibulae of *Große Armbrustfibeln* type are mostly related to the Early Migration Period (Godłowski 1970, Plate XII.2), but their appearance is attributed to Phase IIIa of Dollkeim-Kovrovo culture (Nowakowski 1996, Table 105.4). The items (Skvortsov 2000, Figs. 98; 154; 175; 197; Kulakov 2007, Figs. 20.2; 24.4; Khomiakova 2007, Fig. 1; Jakobson, Archive) were discovered within oval-shaped buckles of types H11, H16 and H39 by R. Madyda-Legutko (1987, Tables 19.11, 19; 20.39), amber beads of types TM388–389, and TM400 (Tempelmann-Mączynska 1985, Table 15.388–398, 400), silver bucket-shaped pendants, bracelets with thickened terminals, and neck-rings with pear-shaped terminals.

Another division of *Große Armbrustfibeln* are fibulae made entirely of iron and ornamented with multiple silver rings (six items) (Fig. 2.5; Fig. 4.1–2). Decorative knobs characterise both the bow-head and spring ends. These specimens should be associated with an earlier chronological position (C_{1b}–C₂ period). The item from grave 44 of the Bol'shoe Isakovo (formerly Lauth) burial ground (Skvorzov 2004/2005, p.137) occurred with A211 fibulae, a finger-ring of type 40 by Christamaria Beckmann, and a neck-ring with wire-coiled terminals. Other pieces are noted with belt-shaped pendants,

III

BALT
SOCIETIES:
AN ATTEMPT
TO PENETRATE
THE MIST

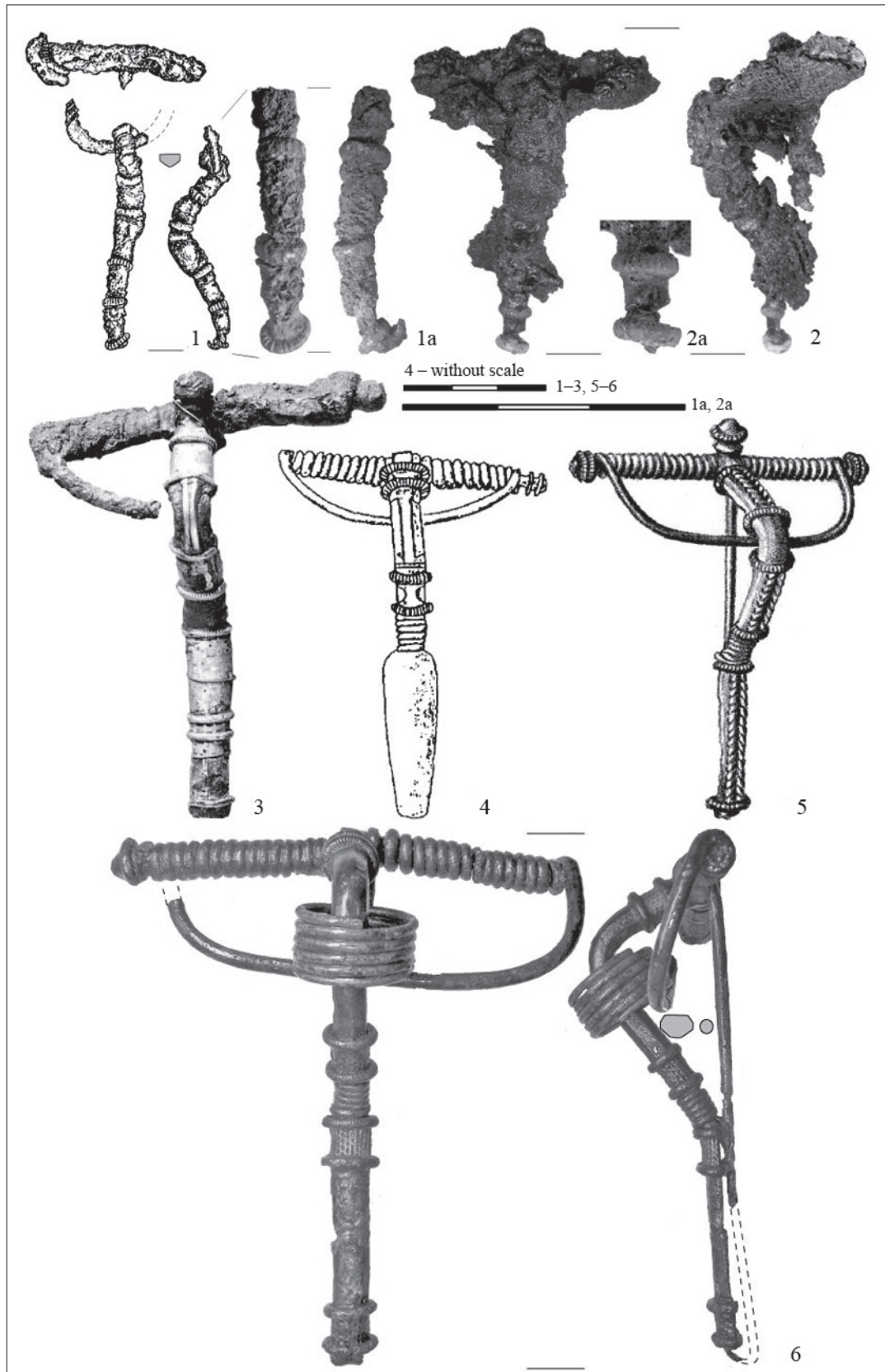


Fig. 4. Fibulae ornamented with Ring Decoration of Types II–III: 1-1a Bol'shoe Isakovo, grave 44; 2, 2a Kovrovo, grave 306; 3 Kovrovo, grave 85; 4 Gerojskoe 5, grave 194; 5 Elanovka, grave 31; 6 former Greibau, stray find (1–3 iron and silver; 4 bronze (?); 5–6 bronze and silver; 1 after Skvorzov 2004/2005, Table 52.48; 1a, 2-2a, 6 photographs by O. Khomiakova; 3 after Günther, Voss 1880, No 407; 4 after Nowakowski 1996, Table 84.1; 5 after Tischler, Kemke 1902, Table III.19).

fibulae of type A161-162 (with three knobs), Roman coins and shield-bosses of type L by Zieling (Radjuš, Skvortsov, 2008, p.135; Jakobson, Archive).

The sole fibulae of *Große Armbrustfibeln* type are distinguished by the head-knob and the special ring decoration of Subtype II.1, represented by a combination of notched wire coils and strip-twisted wire soldered on a bow (Fig. 4.3, 5; Appendix I). Thus, specimens with an O-shaped foot furnished with a border of notched wire should be mentioned (Jentsch 1896, Table II) (Fig. 4.4). The items should be dated to Late Roman (cf. file card of Grebieten 1907–108, Jakobson Archive) and even to the beginning of the Migration Period (Bitner-Wróblewska 2007, p.49).

Type III is introduced only in the decoration of *Große Armbrustfibeln* (18 items). The placement of segments on a foot and the transitional part between the bow and the foot were the same as on A167 fibulae (Figs. 2.6; 4.6).

The combination of wire and elements of embossed foil should be considered as characteristic of the late phase of the Late Roman Period. Fibulae adorned with segments of Type III (Tischler, Kemke 1902, pp.39, 44; Skvortsov 2000, Fig. 245; 2001, Figs. 212; 246; 2002, Fig. 179; Kulakov 2005a, Fig. 45; 2007, Fig. 92; Jakobson, Archive) occurred with fibulae of type A161-162 (with three knobs), rings of types 16 and 30 by C. Beckmann (1969, Fig. 6. 215, Table 2.30), polyhedral blue beads of type TM126, and amber beads of type TM439 (Tempelmann-Mączynska 1985, Tables 2.126, 16.439). We should mention that the same decoration is characteristic of specimens attributed to the Migration Period, notably for fibulae with so-called pseudo-tension from the sixth and seventh centuries (Åberg 1919, Fig. 7; Gaerte 1929, Fig. 215.d, e; Nowakowski 1998, p.53, Fig. 16.638).

Some notes about eventual stylistic influences

A study of West Baltic specimens ornamented with notched wire makes it possible to define the most significant stylistic influences. At first, they have close analogies in items of Wielbark jeweller's art. Thus, the technique of Baltic craftsmen was the same as for Wielbark (Strobin 1995, p.53): filigree and embossing, and adornment with foil were used. As far back as the B₂/C₁ period, pieces ornamented in the 'Lubowidz' style appeared in Sambia. Fibulae of type A130 inlaid with gold foil were widespread in Sambian antiquities. They are known from Grachjovka (formerly Craam), Grebieten, Izobil'noe (formerly Klein Fließ), Zhukovskoe (formerly Margen), Dubravka

(formerly Regehnen), Pridorozhnoe (formerly Stobingen), Hrustal'noe (formerly Wiekau) and Bol'shoe Isakovo burial grounds (Jahnkuh, Archive; Skvorzov 1999, Fig. 33.2-3) (Fig. 5.1-1a). They find parallels in fibulae known not only from Pruszcz Gdański 10 and Lubowidz burial grounds of the Vistula delta region (Wołagiewicz 1995, p.13; Piertzak 1997, pp.35, 58), but also from Cecele burial ground in the Podlaskie voivodeship of Poland (Jaskanis 1996, p.73). The occurrence of type A211 fibulae is related to the C_{1a}–C_{1b} period both in Sambian-Natangian culture and Wielbark culture (Godłowski 1994, p.485, Figs. 99.11, 12; Nowakowski 1996, p.57).

Unlike local specimens, Wielbark crossbow fibulae, furnished with hoops, have direct analogies in the provincial Roman fashion of ring decoration (see A236-237 fibulae; Almgren 1923, Table XI.236, 237). They are usually characterised by three wire rings in a group, where the middle one often has a greater diameter. The fact that items were widespread in the Lower Vistula region, Mazovia and Podlasia (Andrzejowski, Cieśliński 2007, p.305ff, Fig. 27), particularly type A211-213 fibulae from grave 7 of Grzybica (Hahula, Wołagiewicz 2001, p.19, Table XIX.1) and grave 15 of the Cecele burial ground (Jaskanis 1996, p.14, Table II, Fig. 15.1, 2) draws our attention. Type A211 fibulae from grave 206 of the Pruszcz Gdański 10 burial ground (Piertzak 1997, Table LXIX) are characterised by wire segments of two and three hoops in a group dated to the B₂/C₁ period.

Specimens adorned in the same stylistic way are also represented in Sambian-Natangian territories (Figs. 2.2, 5.5). Twenty-four items of Almgren VI group fibulae were taken into consideration. The largest number of them belong to type A167, but individual fibulae of type A161 and *Große Armbrustfibeln* are also known. These pieces are found in association with type A161-162 (with three knobs) fibulae (Skvorzov 2001, Fig. 264; 2004/2005, p.121; Khomiakova 2010a, p.287; Jakobson, Archive). This gives us the possibility to date them to the C_{1b}–C₂ period. But the earliest forms should be connected with the C_{1a} phase. The specimen from grave 11A in the Bol'shoe Isakovo burial ground is noted with three-crossbar fibulae of 'Masurian' type (Skvortsov 2004/2005, p.121ff, Table 10). Thus, the determination of the age of West Baltic fibulae of Almgren groups VI and VII makes it possible to consider them to have occurred in Sambia at the same time as the Lower Vistula region.

Isolated silver crossbow fibulae discovered in Sambia should be examined separately (Fig. 5.2-3). They are characterised by an accurate bow, extended spring, and ornamentation with single wire coils. Close analogies

III

BALT
SOCIETIES:
AN ATTEMPT
TO PENETRATE
THE MIST

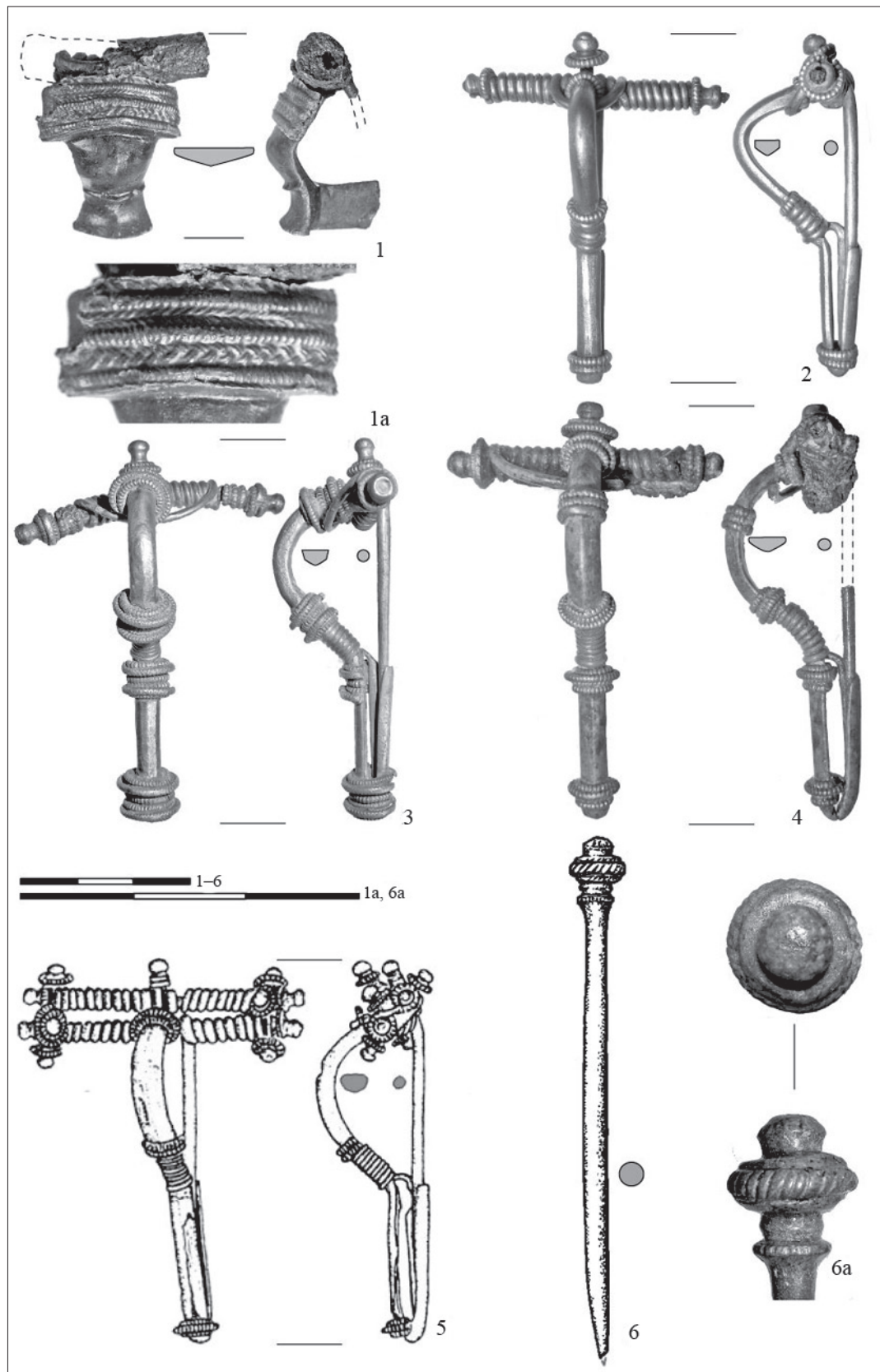


Fig. 5. Imports and goods with direct analogies in East German territories and Scandinavia: 1 Bol'shoe Isakovo, grave 1; 2 Bol'shoe Isakovo, grave 53; 3 Alejka, grave 76; 4 Bol'shoe Isakovo, grave 11a; 5 Bol'shoe Isakovo, grave 40; 6 Dobroje, grave 277 (1, 1a, 4 bronze and silver; 2, 3, 5 silver; 6, 6a bronze; 1-4, 6a photographs by O. Khomiakova; 5 after Skvorzov 2004/2005, Table 47.20; 6 after Khomiakova 2010, Fig. 5.16).

from Wiebark burial grounds attributed to the C_{1a} , C_{1b} – C_2 periods (Jaskanis 1996, Tables XIV; LXXI; Andrzejowski, Żórawska 2002, p.42ff) suggest that some of them are imported from East German territories. The fibula from grave 53 of the Bol'shoe Isakovo burial ground deserves attention as an example (Fig. 5.2). The bronze specimen from grave 11 of the Bol'shoe Isakovo burial ground (Skvorzov 2004/2005, pp.120-121, Table 10.6), decorated with segments of three hoops, is regarded as a local form (Fig. 5.4). The silver item from grave 40 of the Bol'shoe Isakovo burial ground is characterised by a double spring and extra knobs at the ends of the springs (Fig. 5.5). A fragmented fibula of the same type was also discovered in grave 148 of Alejka 3 (formerly Jaugehnen) burial ground (cf. KOI-HM depository). We should note that double-spring crossbow fibulae datable to the C_2 period are typical of East German assemblages (Mączyńska 2003, p.420, Fig. 3.13).

In addition, the tradition to make an inlay with wire and elements of embossed foil also finds direct analogies in Lower Vistula antiquities. Fibulae of type A161-162 pertaining to the Late Roman Period were widespread in the Elbląg Heights region (Natuniewicz-Sekuła 2005).

On the other hand, a number of West Balt techniques absorbed Scandinavian and north German stylistic traditions. Shields and handles of swords ornamented with embossed and granulated elements attributed to the second half of the third century are known from the bog offering of Ilerup Ådal (Birorski, Illkjær 2006, pp.60, 162, Fig. 49). Decoration with strip-twisted wire characterised the assemblages of the Danish and Swedish islands related to both the Early and the Late Roman Period (Andersson 1995, p.65). Golden pendants of type VMIII known from north Jutland and Norway were furnished with wire coils (Andersson 1995, p.127, Fig. 95). Type A24 fibulae attributed to the B_2 – B_2/C_1 period are ornamented in the same stylistic way (Almgren 1923, Table II.24; Schuster 2010, Fig. 21).

In this context, the unique bronze pin from grave 277 of the Dobroe (formerly Hüenberg bei Rantau) burial ground needs to be analysed (Fig. 5.6-6a). The item has a profiled moulded head enriched with an imitation of notched and strip-twisted wire rings and a head-knob. This pin is considered to be a local form that finds distant analogies in specimens of type 110 subgroup VIIb (Beckman 1966, p.35, Table 4.VIIb–110, map 19), characterised by heads composed of embossed foil and notched wire coils. In the assemblages of Varpelev, Skovgård and Himlingøje burial grounds, they are dated to C_{1b} – C_2 (Ethelberg 2000, p.62ff, Fig. 56).

It should be mentioned that not only the decoration techniques but the morphological features of fibulae also find parallels in north Germany and Scandinavia. Local specimens of type A211 are seen to be similar to fibulae from Schleswig-Holstein and Mecklenburg-Vorpommern assemblages (Almgren 1923, p.206ff; Schulte 1998, p.287, Fig. 5). West Baltic items of *Große Armbrustfibel* type, provided with segments of Subtype II.1, have analogies in A168 fibulae from Gotland (Almgren 1923, p.78, Table VII.168).

In addition, Sambian rosette fibulae (*Rosettenfibeln*) are characterised by the same techniques and elements of ornamentation as wire coils. They are attributed to C_{1b} – C_2 . In elite graves in Danish territories, they are related to the C_{1b} period, in Mecklenburg-Vorpommern to the C_{1a} – C_{1b} periods (Ethelberg 2000, Fig. 37b; Lund Hansen, Przybyła 2010, p.241). Rosette fibulae from the Grebieten and Ushakovo (formerly Brandenburg) burial grounds (Appendix I) are close to the forms discovered in the Skovgård and Slusegård burial grounds and specimens from Bornholm (Ethelberg 2000, Figs. 40; 43). Yet another Sambian rosette fibula from grave 78 of the Bol'shoe Isakovo burial ground finds analogies in Elbląg Heights antiquities (Lund Hansen, Przybyła 2010, p.278, Fig. 34.7-8, 10-11). Morphological characteristics and adornments enable us to consider them as a single division of jewellery produced in the same workshop's traditions (Lund Hansen, Przybyła 2010, Figs. 34-39).

Ring decoration in Baltic lands and its exclusive traits

As opposed to the East German tradition of ornamentation with notched wire, which demonstrates more similarities with the provincial Roman fashion, the Sambian variation introduces a sort of stylistic extravagance. On the one hand, the 'classic' segment (of Type I) can be regarded as a complication of the Wielbark model, and on the other as a result of the impact of luxurious forms of the Himlingøje horizon of the C_{1a} – C_{1b} period, defined by extra decorative elements and the use of several techniques. This supposition could be documented by straight analogies from the Danish islands. A striking example of the local style is also the combination of two groups of coils, joined by a moulded one (Subtype I.1).

But it should be mentioned that all the discussed types find a multitude of parallels in the Masurian Lakeland in fibulae and neck-rings adorned with rings. Goods ornamented with segments of type I in Bogaczewo culture are attributed to the same period (Nowakowska 2004, p.314; Szymański 2005, Table XXVI.4). The

III

BALT SOCIETIES:
AN ATTEMPT
TO PENETRATE
THE MIST

morphological characteristics of the item from Putilovo (Fig. 3.4) find similarities in specimens from the Masurian Lakeland and Nadrovia (cf. the fibula of type A167 from Sinjavino, formerly Kampischkehmen). Ring decoration of Subtype I.1 has its closest analogies in the Suwałki region Netta burial ground (Bitner-Wróblewska 2007, Plate IX.1, 2). The ornamentation of the neck-ring from Netta, graves 7 and 8, could be regarded as an interpretation of Subtype I.1 (Bitner-Wróblewska 2007, Plate V.3). A neck-ring adorned with groups of wire coils is known from the Stręgiel Wielki, Węgorzewo voivodeship (formerly Gross Strengeln II), burial ground, grave 4/5 (Tischler, Kemke 1902, Table XV.1). Fibulae furnished with segments of Type II are known from Boćwinka, Suwałki voivodeship (formerly Alt-Bodschwingken), burial ground (Jakobson, Archive), and other Bogaczewo grave sites (Nowakowski 1998, p.53, Fig. 16.643).

It appears that Ring Decoration demonstrates a uniformity in West Balt lands. Sambia could be the place from where it originated. Only a few differences (local?) in stylistics can be seen, but the arrangement of segments on a fibula bow was the same. But it is quite possible that parallels with Scandinavia were characteristic mostly of Sambian ring decoration because of the location.

However, the same feature is revealed in west Lithuanian assemblages, where the appearance of the Ring Decoration style could be a consequence not only of direct contacts with Sambia but also with Germanic tribes. Items with wire coils and inserted glass segments datable to the third or fourth centuries catch our attention. They are known from the burial grounds of West Lithuanian Stone Circle culture (Stankus 1995, Figs. 50, 52) and find close analogies in the Haßleben-Leuna horizon and bog offerings (von Carnap-Bornheim 2000, pp.45-61, Tables 1-2). The adornment of fibulae from Šernai and Aukštikiemiai (formerly Oberhof) assemblages (Gaerte 1929, Figs. 169.e, 170.d) with strip-twisted and notched wire could also reflect a certain Scandinavian impact, though all of these forms find parallels in Sambia and the Masurian Lakeland. Individual specimens furnished with notched wire and inserted glass segments in Sambian-Natangian culture are also known (cf. the neck-ring from Eisliethen, grave 82, MVF 12594).

The West Balt (especially Sambian) style was probably a model for East Balt forms. Segments of notched wire on Lithuanian fibulae of type A167 were represented by Type I and characterised by two groups of coils joined by one small one. Some of them demonstrate a simplifying of Ring Decoration. The bows of the fibulae discussed could be ornamented with single hoops, the ends of springs with simple knobs (Michelbertas

1986, Fig. 40.1-2). Individual ones of type A161-162 could have no knobs at the ends of the spiral.

Besides, attention should be paid to fibulae of types Å4-6 by N. Åberg (1919, p.14. Figs. 4-6), occurring in East Balt territories (Moora 1929, pp.132-142; Tautavičius 1978, map 26.3). The earliest items known from Plinkaigalis burial ground assemblages have wire and elements of embossed foil (Type III) dated to the fifth century (Kazakevičius 1993, Fig. 156). They preserve the earliest Sambian design of placing segments on a bow. The latest pieces pertaining to the fifth and sixth centuries could be characterised by a needlecase fully plated with foil. In Curonian assemblages, this ornamentation could exist up to the seventh and eighth centuries (Bliujienė 1999, p.81, Figs. 11-15). In Sambia, wire coils are represented in the adornment of fibulae from the Suvorovo (formerly Zophen) and Mitino (formerly Stantau) burial grounds, datable to the late seventh and early eighth century (Kulakov 1990, Fig. 12.6; Skvorzov 2010, p.38, Table CDX.1-1a).

With regard to specimens enriched with wire coils known from other East European territories, they are often characterised by the Wielbark tradition of placing rings on a bow.³ Attention should be paid to A167 fibulae with rings that are widespread in the Pobuzhzhza region (Belevec 2007, p.58ff, Fig. 2.d2, e1-3). Items from Brest-Trishin burial ground assemblages have single hoops on a bow, and on the transitional part between the bow and the foot (Kuharenko 1980, Tables XVII.56v; XXVII 11b). In addition, the A161-162 fibula from grave 8 of the Rudka burial ground is characterised by similar ornamentation (Petersen 1941, Fig. 5). Rings could also be placed on knobs on a spring, at the junction of the bow and the spring, and at the head of the fibula (Kuharenko 1980, Tables VIII. 8a; XVII. 56v; XXVII. 11b).

This style of ring decoration was characteristic of Almgren VII and VI group fibulae from Chernyakhov culture datable to the C_{1b}-C₂ period (Sharov 1992, p.173), or the 'Ruzhichanskaia' phase of Evgeny L. Gorohovskij (1988). The items occurring in Ukrainian and south Russian territories were adorned with single (or double) wire coils placed on a bow (Oblomskij 2003, Figs. 27.6, 32.3, 4; Petrauskas 2003, Table 21.9; Gorohovskij, Gopkalo 2004, Figs. 5.1-4, 6.5-10, 7.1-40). It is quite possible that being in a different cultural and historical context, East European craftsmen did not work out their own tradition of decoration with rings. They only mechanically imported the Wielbark

³ This does not exclude the possibility of the Provincial-Roman impact on a moulding of East European forms of Almgren group VII fibulae (Gorohovskij, Gopkalo 2004, p.111), thus the Wielbark fashion of placing ring decoration segments was similar to Provincial-Roman.

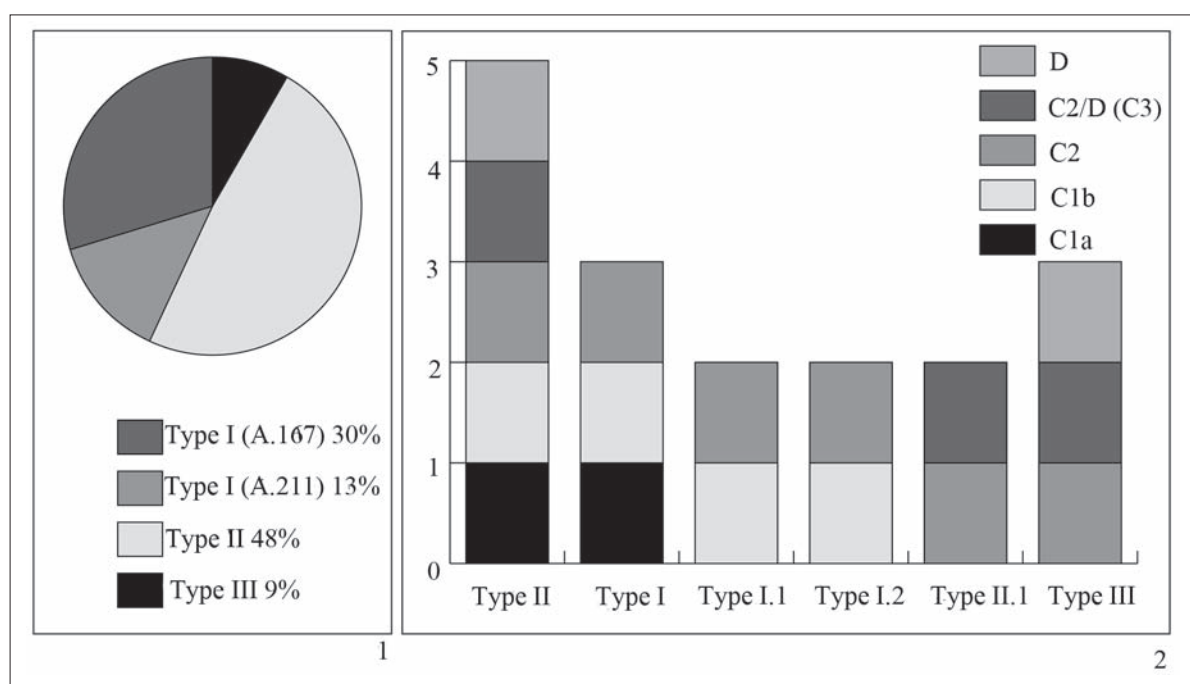


Fig. 6. Statistics: 1 the distribution of Ring Decoration fibulae; 2 the dating of Ring Decoration types.

style, which was then imitated and simplified in local forms (Radjush 2010, Table IX.7-11).

Thus, West Balt goldsmiths not only reiterated the basic examples, but succeeded in introducing their own vision of decoration with hoops. They created a special new variety of Ring Decoration style, on the basis of Scandinavian filigree and Wielbark jewellers' artistic traditions, which defined a tradition of Balt items in the Late Roman and then the Migration Period. Undoubtedly, this should be regarded as a reflection of Balt jewellers' art and the level of technical skill. The combination of methods of decoration, practices and tools was sufficiently unified. The artistic ideas of the West Balts could also establish certain limits which goldsmiths did not exceed.

Ring Decoration style in the context of local elites

Noticing the correlation of Ring Decoration types, we should declare that Wielbark influence dominated and was certainly explained by the leading role of the Vistula delta region in the amber trade (Okulicz-Kozaryn 1992, p.145) (Fig. 6.1-2). The fashion for ornamented goods with notched wire appeared in West Balt territories in the early phase of the Late Roman Period, and continued to exist during the Roman Period and the Migration Period, even after the transformation of Wielbark culture.

The prevalence of goods ornamented under the influence of the traditions of Scandinavian jewellers was

shorter (to be exact, in the C_{1b}-C₂ and C₂ periods) but more significant. Specimens of this division are noted in association with artefacts which have parallels in assemblages of Haßleben-Leuna and Himlingøje horizons.⁴ The item from grave 53 of the Bol'shoe Isakovo burial ground (Skvorzov 2004/2005, p.141ff, Table 66) occurred with a type A167 fibula (Fig. 5.2) and sole lamellate belt-ending dotted with S-shaped stamped and granulated elements (Fig. 7.7). It has close analogies in sword belts known from bog offerings from the territory of Jutland (Ilkjær 1993, p.224ff, Fig. 81). In West Balt assemblages, a similar belt ending is known from the Bandužiai burial ground (Stankus 1995, Fig. 55.1).

Fibulae of type A211 and of *Große Armbrustfibeln* type from grave 44 of the Bol'shoe Isakovo burial ground (Fig. 4.1-1a) was found with a silver neck-ring and a finger-ring of type 40 by C. Beckmann with imitated zoomorphic terminals, and also a clay games counter (Fig. 7.1, 4-5). It should be observed that neck-rings with wire-coiled terminals are widespread in Germania Libera territories, in the Rhine region and Przeworsk culture (Godłowski 1970, Plate III.19). In antiquities of Worms (Rheinland-Pfalz, Germany), they are dated to the end of the third century (Bernhard 1982, p.94, Table 26.5, 6). Games counters made of clay are known from bog offerings from Vimose (Engelhardt 1969, Table 3.12-14). West Balt finger-rings of type 40 found by C. Beckmann find prototypes in zoomor-

⁴ The number and range of corresponding artefacts from Sambian-Natangian culture is greater. In this paper, I touch only on items noted in association with goods decorated in the Ring Decoration style.

III

BALT SOCIETIES: AN ATTEMPT TO PENETRATE THE MIST

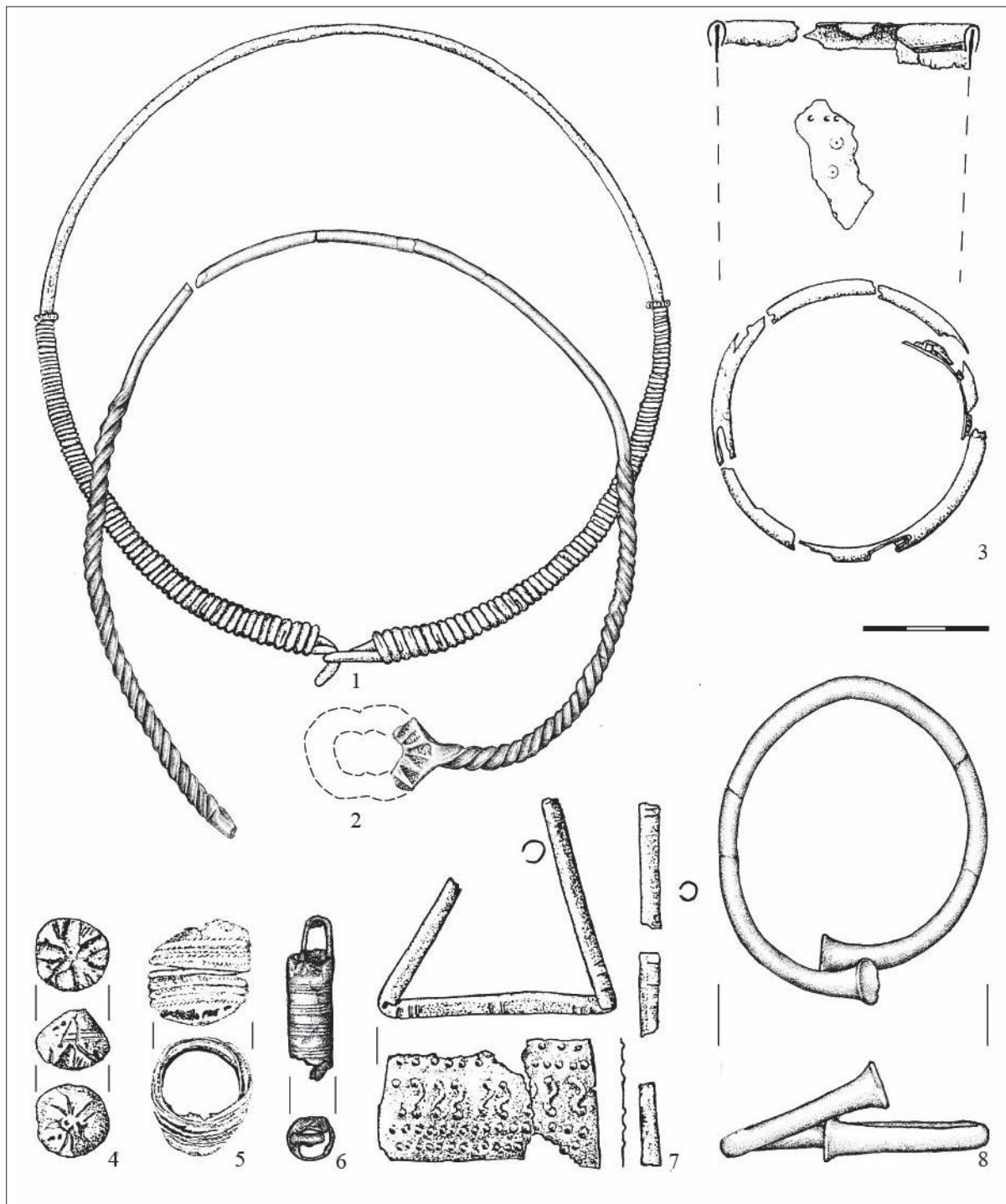


Fig. 7. Goods from 'richly furnished' graves at Bol'shoe Isakovo burial ground: 1-2 neck-rings; 3 drinking horn; 4 games counter; 5 ring; 6 bucket-shaped pendant; 7 belt ending; 8 bracelet (1, 5 silver; 2-3, 6-8 bronze; 4 clay) (1, 4-5 grave 44; 3 grave 40; 7 grave 53; 2, 6, 8 grave 158) (1, 3-5, 7 after Skvorzov 2004/2005, Tables 47.18, 19; 51.4, 5; 52.46; 66.20, 34, 36; 2, 6 after Khomiakova 2007, Fig. 1)

phic items of type 39 by C. Beckmann, widespread in Oland, Gotland and Scandinavian territories in the C_{1b}–C₂ period. Their local forms are also known from Baltic lands and tarand grave sites. They are considered to be insignia of high social status (Andersson 1995, p.146, Fig. 126; Beckmann 1969, p.49, Fig. 21, Tables 2.40; 17; Banytè-Rowell 2007, pp.26-28). The bronze

drinking horn from grave 40 of the Bol'shoe Isakovo burial ground also deserves attention (Fig. 7.3). Similar specimens of type K.1 found by J. Andrzejowski (1991, p.44) are known in East German assemblages.

In this connection, some artefacts from graves 119 and 158 at Bol'shoe Isakovo, grave 140 at Kovrovo, and grave 46 at Grebieten burial grounds should be

mentioned. Notably, neck-rings with pear-shaped terminals (Grebieten, grave 45, Jakobson, Archive) (Fig. 7.2), silver oblong bucket-shaped pendants (Tischler, Kemke 1902, p.23; Jakobson, Archive) (Fig. 7.6), and bracelets with thickened ends (Fig. 7.8) in West Balt assemblages are related to the late phase of the Late Roman Period and the Early Migration Period (Khomiakova 2007, p.71). These specimens also have close analogies in insignia from richly furnished German graves of the Haßleben-Leuna horizon, Scandinavian assemblages, bog offerings (Andersson 1995, p.90; Ethelberg 2000, p.64ff; Carnap-Bornheim, Ilkjaer 1996, p.351ff; Boye, Lund Hansen 2011, p.203) and East German territories (Andrzejowski, Martens 1996, Plate XXXI.4), datable to the C_{1b} - C_2 period.

In spite of the fact that all of the items find their prototypes in Scandinavian gold finds, West Balt specimens were mostly produced of bronze. Isolated imported goods (such as rosette fibulae) should be regarded as exceptions. The graves we touch upon are distinguished only by particular equipment, not by burial rite. They were presented by cremations and pit graves located in a community's cemeteries, and did not possess the criteria of a chieftain's graves of Haßleben-Leuna or Himlingøje horizons. They possibly reflected the high social status of others in a group. It should be noted that the question of tribal elites and their character in Sambia does not have a definite answer; we do not have enough evidence in archaeological data at present.

But the describable examples enable us to consider the southeast Baltic to be involved in longer-distance connections across the Baltic Sea in the Late Roman Period, alongside the Lower Vistula region. All of these artefacts find parallels in Denmark and continental Europe in the grave inventories of chieftains' families, which played a leading role in the redistribution and exchange between the east and west coasts of the Baltic Sea (Lund Hansen 1988, p.158; 2000, p.81ff; 2011, p.159; Bitner-Wróblewska 2001, p.122ff). Relations between Danish elites and the inhabitants of the southeast Baltic coast are visible, but their character is not clear.

The appearance of the Ring Decoration style in Sambian assemblages is assumed to be a possible result of these connections. Initially, the fashion for providing goods with wire coils could have appeared with imported luxury accessories of prestigious dress (for instance, rosette fibulae), and then spread widely in local forms. They are characterised by particular morphological features, the style and the material, bronze, which is considered to be a traditional material for West Balt specimens. Thus Ring Decoration was representa-

tive of all social groups; however, the most sumptuous and imported goods (fibulae, silver neck-rings) could belong to well-equipped graves and show a high social status, as a sort of local symbol of prestige.

Conclusions

The decoration of fibulae with single rings could compare in West Balt territories in the C_{1a} - C_{1b} periods with imports and specimens which find close analogies in Wielbark and Przeworsk areas (substantially, fibulae of types A167 and A161-162). Type II may be considered (Fig. 6.2) the earliest version of Ring Decoration style. The appearance of Type I (mostly present on A211 and Almgren group VI fibulae), both in its 'classic' Balt version with seven rings, and with two or three rings in a group, should be dated to the same period. Specimens supplied with versions of Type I are connected to traditions of the Haßleben-Leuna and Himlingøje horizons of C_{1b} - C_2 periods. Type III, attributed to the late phase of the Late Roman Period and the beginning of the Migration Period, is regarded as the latest.

Finally, the Balt version of the Ring Decoration style reached the peak of its progress at the very beginning of its subsistence, notably in the C_{1b} - C_2 period, while the contacts within the limits of the Amber Road in a north-southeast direction were the most concentrated.

As a conclusion, the appearance of the Ring Decoration style in West Balt territories should probably be regarded as a reflection of longer-distance contacts and possible exchanges between members of elites. Despite the fact that the tribal elite's character in Sambian-Natangian culture is now open, imports and the stylistics of some local specimens (Fig. 7) enable us on the one hand to consider part of West Balt society to be involved in exchange and redistribution. On the other hand, these items indicate the possibility of connections with chieftains' families from the Sjælland and Haßleben-Leuna group, and an acquaintance with some of their own distinctive customs. Ring Decoration characterises both fibulae and other goods which find their closest parallels in artefacts regarded as marks of prestige.

The appearance of the tradition of decorating goods with wire coils in Sambian antiquities proves the availability of these contacts not only in the context of exchange, but in questions of adopting style and 'fashion'. The use of ways and techniques characteristic of prestigious German dress accessories in the adornment of local items, and the occurrence of 'high-rank status' attributes in the inventory of graves with the earliest West Balt pieces of Ring Decoration style, make this feasible.

III

BALT SOCIETIES: AN ATTEMPT TO PENETRATE THE MIST

Acknowledgements

I would like to thank my colleague Konstantin N. Skvortsov (of the Kaliningrad Region History and Art Museum) who gave me the possibility to work with unpublished material from the burial grounds of Bol'shoe Isakovo and Alejka 3.

Abbreviations

Literature

Arch. Baltica – *Archaeologia Baltica* (Vilnius 1995–2002, Klaipėda since 2006)
 Germania Sarmatia – *Germania-Sarmatia. Drevnosti Central'noi i Vostochnoi Evropy*, Kaliningrad
 Lietuvos arch. – *Lietuvos archeologija* (Vilnius, since 1975)
 MAB – *Monumenta Archaeologica Barbarica*
 PRUSSIA – *Sitzungsberichte der Altertumsgesellschaft Prussia, Königsberg I Pr.*
 RA – *Rossikaia Archeologija* (Moscow, since 1992)
 SPÖG – *Schriften der Physikalisch-Ökonomischen Gesellschaft zu Königsberg I Pr.* (Königsberg I Pr.)

Institutions

BAJE – Baltic Archaeological Expedition
 IA RAN – Institute of Archaeology of the Russian Academy of Sciences
 KGOM – Kaliningrad State Regional Museum

Museums

KOIHM – Kaliningrad Region History and Art Museum, Kaliningrad
 MVF – Museum für Vor- und Frühgeschichte, Staatliche Museen zu Berlin – Preußischer Kulturbesitz Berlin

References

Manuscripts

SKVORTSOV K.N. (K. SKVORZOV), 1995. Kljanhajde III–XII vv. n.e. Otchet o rabote Natangiiskogo otriada Baltijskoi ekspedicii. *In: Arhiv IA RAN. R-I. No. 19799.*
 SKVORTSOV K.N., 1999. Otchet ob ohrannyh raskopkah, provedennyh Natangiiskim otriadom BAJE IA RAN na mogil'nike B. Isakovo-Laut v 1998 g.. *In: Arhiv IA RAN. R-I. No. 21982.*
 SKVORTSOV K.N., 2000. Otchet ob ohrannyh raskopkah, provedennyh Natangiiskim otriadom BAJE IA RAN na mogil'nike Bol'shoe Isakovo-Laut v 1999 godu. *In: Arhiv IA RAN. R-I. No. 23285.*
 SKVORTSOV K.N., 2001. Otchet ob ohrannyh raskopkah, provedennyh Natangiiskim otriadom BAJE IA RAN na mogil'nike B. Isakovo-Laut v 2000 g.. *In: Arhiv IA RAN. R-I. No. 24733.*
 SKVORTSOV K.N., 2002. Otchet po ohrannym raskopkam gruntovogo mogil'nika Laut-Bol'shoe Isakovo Sambiisko-natangiiskoj ekspedicii v 2002 g.. *In: Arhiv IA RAN. R-I. No. 25795.*

SKVORTSOV K.N., 2003. Otchet po raskopkam gruntovogo mogil'nika Laut-Bol'shoe Isakovo Sambiisko-Natangiiskoi arheologicheskoi ekspedicii v 2003 godu. *In: Arhiv IA RAN. R-I. No. 25796.*

F. JAKOBSON, Archive–Scientific archives of Felix Jakobson, stored at the Latvijas Nacionālā in Vēstures Muzejs, Rīgā.

H. JAHNKUHN, Archive–Scientific archives of Herbert Jahnkuhn, stored at the Archäologisches Landesmuseum Schloß Gottorf in Schleswig.

Literature

ÅBERG, N., 1919. *Ostpreußen in der Völkerwanderungszeit.* Uppsala-Leipzig: Almqvist & Wiksells Boktryckeri-A.-D.
 ALMGREN, O., 1923. *Studien über die nordeuropäische Fibelformen der ersten nachchristlichen Jahrhunderte mit Berücksichtigung der provinzialrömischen und südrussischen Formen.* Mannus-Bibliothek, 3.2. Leipzig: Habelt.
 AMBROZ, A.K., 1966. Fibuly juga evropejskoj chasti SSSR. *In: V.V. SEDOV, B.A. RYBAKOV, eds. Svod arheologicheskikh istochnikov, D1-30.* Moskva.
 ANDERSSON, K., 1995. Romartida guldsmede i Norden. Övriga smycken, teknisk analys och verkstadsgrupper (Roman period gold jewellery in the Nordic countries. Other objects, technical analysis and workshop groups). *In: B. GLÄSLUND, ed. Aun, 21.* Uppsala.
 ANDRZEJOWSKI, J., 1991. Okucia rogów do picia z młodszego okresu przedrzymskiego i okresu wpływu rzymskich w Europie Środkowej i Południowej (Proba klasyfikacji i analizy chronologiczno-terytorialnej). *Materiały Starożytne i Wczesnośredniowieczne, 6, 7-120.*
 ANDRZEJOWSKI, J., MARTENS, J., 1996. The Wielbark Cemetery. Information on Unpublished Material from the Personal Files of Carl-Axel Moberg. *In: Studia Gothica, I, Lublin, 19-73.*
 ANDRZEJOWSKJ, J., CIEŚLIŃSKI, A., 2007. Germanie i Bałtowie u schyłku starożytności. Przyjazne związki czy wrogie sąsiedztwo? *In: A. BITNER-WRÓBLEWSKA, ed. Kultura bogaczewska w 20 lat później. Materiały z konferencji, Warszawa, 26–27 marca 2003. Seminarium Bałtyckie, I, Warszawa, 279-319.*
 ANDRZEJOWSKJ, J., ŻÓRAWSKA, A., 2002. Cmentarzysko kultury wielbarskiej na stan. I w Nadkolu, woj. Mazowieckie. *In: J. ANDRZEJOWSKI, ed. Varia Barbarica, 2002, Warszawa-Lublin, 29-80.*
 BANYTĖ-ROWELL, R., 2007. Vėlyvojo romėniškojo laikotarpio žiedas iš Baitų kapinyno. Pavidalo kilmė baltijos regiono kultūrinių ryšių plotmėje. *Lietuvos arch., 30, 9-38.*
 BECKMANN, CHR., 1969. Metallfingerringe der Römischen Kaiserzeit im Freien Germanien. *Saalburg Jahrbuch, 26, Berlin, 7-106.*
 BECKMANN, B., 1966. Studien über die Metallnadeln der römischen Kaiserzeit im freien Germanien. Eine Untersuchung ihrer Formen, Zeitstellung und Verbreitung. *Saalburg Jahrbuch, 23, 5-100.*
 BELEVEC, V., 2007. Mogil'nik Brest-Trishin: 30 let po okonchani raskopok. *Acta archaeologica Albaruthenica, 1, Minsk, 49-86.*
 BERENDT, G., 1873. Zwei Gräberfelder in Natangen. *SPÖG, XIV, 81-101.*
 BERNHARD, H., 1982. Germanische Funde der Spätantike zwischen Straßburg und Mainz. *Saalburg Jahrbuch, 38, 72-110.*

- BEZZENBERGER, A., 1904. *Analysen vorgeschichtlicher Bronzen Ostpreußens*. Königsberg: Gräfe & Unzer.
- BIRORSKI, M. ILLKJÆR, J., 2006. Die Schwerter. Illerup Ådal. *Jutland Archaeological Society Publication*, XXV.11.
- BITNER-WRÓBLEWSKA, A., 2001. *From Samland to Rogaland*. Warszawa: Państwowe Muzeum Archeologiczne, Stowarzyszenie Naukowe Archeologów Polskich Oddział w Warszawie.
- BITNER-WRÓBLEWSKA, A., 2007. *Netta. A Balt Cemetery in Northeastern Poland*. In: Monumenta Archaeologica Barbarica, XII, Warszawa.
- BLIUJENĖ, A., 1999. *Vikingų epochos kuršių papuošalų ornamentika*. Vilnius: Diemedžio leidykla.
- BOYE, L., LUND HANSEN, U., 2011. The Dynasty? Society and Social Structures of Late Roman Iron Age. In: L. BOYE, P. ETHELBERG *et al.*, eds. *Archäologie in Schleswig, Det 61. Internationale Sachsensymposium 2010, Haderslev, Denmark*. Neumünster, 199-210.
- BUJACK, G., 1888. Das Gräberfeld zu Grebieten (nördliche Hälfte) in der dieselbe begrenzende Weg aus der sogenannten Römischen Periode 2. Jahrhunderts. *Prussia*, 13, 195-272.
- von CARNAP-BORNHEIM, C., 2000. Einige jünger-kaiserzeitliche Beispiele überregionaler Trachtbeziehungen zwischen dem baltischen und germanischen Kulturbereich. *Arch. Baltica*, 4, 45-61.
- von CARNAP-BORNHEIM, C., ILLKJÆR, J., 1996. Illerup Ådal. *Jutland Archaeological Society Publications*, XXV: 5. Aarhus.
- ENGELHARDT, C., 1969. *Sønderjyske og Fynske Mosefund. Thorsbjerg Mosefund, Nydam Mosefund, Kragehul og Vimosefundene*. København: Forlaget zac.
- ETHELBERG, P., 2000. Skovgårde. Ein Bestattungsort mit reichen Frauengräbern des S. Jhs. n. Chr. auf Seeland. *Nordiske fortidsminder*. Serie B, 19, København.
- GAERTE, W., 1929. *Urgerichte Ostpreussens*. Königsberg: Gräfe und Unzer, Königsberg i. Pr.
- GODŁOWSKI, K., 1970. *The Chronology of the Late Roman and Early Migration Periods in Central Europe*. Kraków: Uniwersytet Jagielloński.
- GODŁOWSKI, K., 1994. Vorrömische Eisenzeit und Römische Kaiserzeit im östlichen Mitteleuropa und in Osteuropa. *Reallexikon der Germanischen Altertumskunde: Fibel und Fibeltracht*, 8, Berlin–New York, 68-86.
- GOROHOVSKIJ, E.L., GOPKALO, O.V., 2004. Fibuly VII grupy O. Al'mgrena v areale Chernjahovskoi kul'tury. In: D.N. KOZAK, ed. *Arheologija drevnih slavian*. Kiev: Institut arheologii NAN Ukraini, 103-130.
- GOROHOVSKIJ, E.L., 1988. Hronologija chernjahovskih mogil'nikov Lesostepnoj Ukrainy. In: B.A. RYBAKOV, ed. *Trudy V Mezhdunarodnogo kongressa arheologov-slavistov*, 4, 34-46.
- GÜNTHER, C., VOSS, A., 1880. *Photographisches Album der Prähistorischen und Anthropologischen Ausstellung zu Berlin*, I, Berlin: Druck von C. Berg & v. Holten.
- HAHULA, K., WOŁĄGIEWICZ, R., 2001. *Grzybnica. Ein Gräberfeld mit Streinkreisen der Wielbark-Kultur in Pommern*. In: Monumenta Archaeologica Barbarica, VIII, Warszawa–Koszalin.
- HEYDECK, J., 1888. Der südliche Teil des Gräberfeldes von Grebieten, Kreis Fischhausen. *Prussia*, 13, 181-183.
- HEYDECK, J., 1900. Eine Kultur- und Grüberstelle in Försterei Kl. Flies, Kreis Labiau. *Prussia*, 21, 57-60.
- HEYDECK, J., 1909. Das Gräberfeld von Cojehnen Kr. Fischhausen. *Prussia*, 22, 1900-1904, 221-224.
- ILLKJÆR, J., 1993. Illerup Ådal 3 Die Gütel Bestandteile und Zubehör. Textband. *Jutland Archaeological Society Publications*; XXV: 3, Aarhus.
- JASKANIS, J., 1996. *Cecele. Ein Gräberfeld der Wielbark-Kultur in Ostpolen*. In: Monumenta Archaeologica Barbarica, II, Warszawa.
- JENTZSCH, A., 1896. Bericht über die Verwaltung des Ostpreußischen Provinzialmuseum in den Jahren 1893–1895. *SPÖG*, XXXVII, 49-138.
- KAZAKEVIČIUS, V., 1993. Plinkaigalio kapinynas, *Lietuvos arch.*, 10.
- KHOHLOV, A.N., 2010. Poselenija i mogil'niki I – pervykh vekov II tys. n.je. na territorii Sambijskogo poluostrova. In: N.A. MAKAROV, ed. *Novye polevye issledovaniia*. Moskva: Institut arheologii, 73-75.
- KHOMIAKOVA, O.A., 2007. Kompleks ukrashenij iz mogil'nika Bol'shoe Isakovo-Lauth. *RA*, 3, 69-75.
- KHOMIAKOVA, O.A., 2010a. Plastinchatye braslety sambijsko-natangijskoj kul'tury. *Germania Sarmatia*, 2, 277-291.
- KHOMIAKOVA, O.A., 2010b. Stil' kol'cevogo dekora v materialah Sambijsko–natangijskoj kul'tury Pozdnerimskogo perioda. In: A.A. PESKOVA, O.A. SCHEGLOVA, A.E. MUSIN, eds. *Slavjano-russkoe juvelirnoe delo i ego istoki. Materialy Mezhdunarodnoj nauchnoj konferencii, posvjawennoj 100-letiju so dnja rozhdenija Gali Fiodorovny Korzuhinoy (Sankt-Peterburg, 10–16 aprelia 2006 g.)*. Sankt-Peterburg, 128-141.
- KUHARENKO, J.V., 1980. *Mogil'nik Brest-Trishin*. Moskva: Nauka.
- KULAKOV, V.I., 1990. *Drevnosti prussov VI–XIII vv.* In: V.V. SEDOV, B.A. RYBAKOV, eds. *Svod arheologicheskikh istochnikov*, G1-9, 1990, Moskva.
- KULAKOV, V.I., 2004. *Doll'kaim-Kovrovo. Issledovanija 1879 g.* In: *Prussia Antiqua*, 2, Minsk.
- KULAKOV, V.I., 2005a. *The Amber Lands in the Time of the Roman Empire*. British Archaeological Reports. International Series, BAR, 1356, Oxford.
- KULAKOV, V.I., 2005b. Podvjaznye fibuly v jugo-vostochnoj Baltii, *RA*, 1, 37-49.
- KULAKOV, V.I., 2007. *Doll'kaim-Kovrovo. Issledovanija 1992–2002 gg.* In: *Prussia Antiqua*, 4, Minsk.
- KULAKOV, V.I., 2009. Fibuly serii "chudoviwnye" v Vostochnoj Baltii, *RA*, 3, 94-105.
- LUND HANSEN, U., 1988. Handelszentren der römischen Kaiserzeit und Völkerwanderungszeit in Dänemark. Trade and Exchange in prehistory: Studies in honor of Berta Stjernquist. *Acta Archaeologica Lundensia*, Series in 8°, 16. Lund, 155-166.
- LUND HANSEN, U., 2000. Chieftains and Traders looking East the Late Roman and Early Germanic Period contacts between the Eastern Baltic and the Southern Scandinavian area. *Arch. Baltica*, 4, 81-89.
- LUND HANSEN, U., 2011. Contacts during the 3rd to 5th centuries AD between southern Scandinavia and the Black Sea area – glass and glass fragments found in graves and trading centres in northern and central Europe. Beziehungen im 3. bis 5. Jahrhundert zwischen dem südlichen Skandinavien und dem Schwarzmeergebiet – Gläser und Glasreste aus Gräbern und Handelsplätzen in Nord- und Mitteleuropa. In: F. BITTMANN *et al.* eds. *Siedlungs- und Küstenforschung im südlichen Nordseegebiet Settlement and Coastal Research in the Southern North Sea Region*, 34. Bremerhaven, 151-165.
- LUND HANSEN, U., PRZYBYŁA, M., 2010. Rosettenfibeln – ein Klassifikationsversuch. In: U. LUND HANSEN

- EN, A. BITNER-WRÓBLEWSKA, eds. *Words Apart? Contacts across the Baltic Sea in the Iron Age. Network Denmark–Poland, 2005–2008*. København-Warszawa, 241–287.
- MAĆZYŃSKA, M., 2003. Die sogenannten „sarmatischen“ Fibeln in Mittel- und Osteuropa. In: C. von CARNAP-BORNHEIM, ed. *Kontakt – Kooperation – Konflikt. Germanen und Sarmaten zwischen dem 1. und dem 4. Jahrhundert nach Christus. Veröffentlichungen des Vorgesichtlichen Seminars Marburg*, 13. Neumünster, 303–332.
- MADYDA-LEGUTKO, R., 1987. *Die Gürtelschnallen der Römischen Kaiserzeit und der frühen Völkerwanderungszeit im mitteleuropäischen Barbaricum*. British Archaeological Reports. International Series, BAR, 360, Oxford.
- MICHELBERTAS, M., 1986. *Senasis geležies amžius Lietuvoje I–IV a.* Vilnius: Mokslas.
- MOORA, H., 1929. Das Eisenzeit in Lettland bis etwa 500 n. Chr., I Teil: Die Funde. *Opetatud Eesti Seltsi Toimetised*, XXV, Tartu.
- MOORA, H., 1938. Die Eisenzeit in Lettland bis etwa 500 n. Chr., II Teil: Analyse. *Opetatud Eesti Seltsi Toimetised*, XXIX, Tartu.
- NATUNIEWICZ-SEKULA, M., 2005. Zapinka srebrna ze Z³Ot¹ Folii. Photograph. Weklice. Cmentarzysko ludności kultury wielbarskiej. Galery. Previous seasons. Available from: <http://www.iaepan.edu.pl/weklice/galeria/zabytki/popzednie/F1000011.html> [Accessed 16 January 2012].
- NOWAKOWSKA, M., 2004. Przypadek czy ofiara? Obiekt 166 z Ptasiej Wyspy, Szestno, stanowisko II. In: *Swiatowit Supplement Series B: Barbaricum*, 7. Warszawa, 313–317.
- NOWAKOWSKI, W., 1996. Das Samland in der Römischen Kaiserzeit und seine Verbindungen mit den Römischen Reich und der barbarischen Welt. In: C. von CARNAP-BORNHEIM, ed. *Veröffentlichungen des Vorgesichtlichen Seminars Marburg*, 10, Marburg–Warszawa.
- NOWAKOWSKI, W., 1998. Die Funde Der Römischen Kaiserzeit und der Völkerwanderungszeit in Masuren. *Museum für Vor- und Frühgeschichte Bestandskataloge*, 6, Berlin.
- OBLOMSKI, A.M., 2003. Dneprovskoe Iesostepnoe Levoberezh'e v pozdnerimskoe i gunnskoe vremja seredina III – pervaja polovina IV v. n. je. *Rannelslavjanskij mir*, 5, Moskva.
- OKULICZ, J., 1973. *Pradzieje ziem pruskich od późnego paleolitu do VI w. n.e.* In: Monografie dziejów społecznych i politycznych Warmii i Mazur, 1. Wrocław–Warszawa–Kraków–Gdańsk.
- OKULICZ-KOZARYN, J., 1992. Centrum kulturowe z pierwszych wieków naszej ery u ujścia Wisły. In: J. OKULICZ-KOZARYN, W. NOWAKOWSKI, eds. *Barbaricum*, 2. Warszawa, 137–156.
- PETERSEN, E., 1941. Ein reicher gepidischen Grabfund aus Wolhnen. *Gothiskandza*, 3, Danzig, 39–52.
- PETRAUSKAS, O., 2003. Die Gräberfelder der Černjachov-Kultur von Kosanovo und Gavrilovka – eine vergleichende Studie zu Chronologie, Bestattungssitten und ethnokulturellen Besonderheiten. *Bericht der Römisch-Germanischen Kommission*, 84, 223–351.
- PIERTZAK, M., 1997. Pruszcz Gdański. Fundstelle 10. Ein Gräberfeld der Oksywie- und wielbark kultur in Ostpommern. In: *Monumenta Archaeologica Barbarica*, IV. Krakow.
- RADDATZ K., 1957. Der Thorsberger Moorfund. Gürtelteile und Körperschmuck. *Offa*, 13.
- RADJUSH O., SKVORZOV K., 2008. Nahodki detalej wiotov v areale sambijsko-natungijskoj kul'tury. In: *Germania Sarmatia*, 1, 122–158.
- RADJUSH O.A., 2010. Issledovanija poselenija III-IV vv. n. je. u pos. im. Karla Libknehta (Peny) v Kurchatovskom Posem'e. In: *Germania Sarmatia*, 2, 179–214.
- ROTHLA, M.-L., 2005. Fibula as a Reflection of Social Status and Relations. In: V. LANG, ed. *Culture And Material Culture. Papers from the first theoretical seminar of the Baltic archaeologists (BASE 1) held at the University of Tartu Estonia, October 17th–19th, 2003*, *Interarchaeologia*, 1, Tartu–Riga–Vilnius, 121–147.
- SCHULTE, L., 1998. Die Fibeln mit hohem Nadelhalter in Deutschland Forschungsgeschichte und Forschungsansätze. *Forschungen zur Archäologie im Land Brandenburg*, 5, Wünsdorf, 285–298.
- SCHUSTER, J., 2010. Lübsow. Älterkaiserzeitliche Fürstengräber im nördlichen Mitteleuropa. *Bonner Beiträge. Zur Vor- und Frühgeschichtlichen Archäologie*, 12, Bonn.
- SHAROV, O.V., 1992. Hronologija mogil'nikov Ruzhichanka, Kovanovo, Dancheny i problema datirovki cherniahovskoi keramiki. In: M.B. SCHUKIN, ed. *Problemy hronologii jepohi latena i rimskogo vremeni*. St. Petersburg, 158–207.
- SKVORZOV, K., (K.N. SKVORTSOV), 2004/2005. Das Gräberfeld der römischen Kaiserzeit von Bol'shoe Isakovo (ehemals Lauth, Kreis Königsberg). Katalog der Funde aus den Grabungen 1998 und 1999. *Offa*, 61/62, 111–219.
- SKVORZOV, K.N., (K.N. SKVORTSOV), 2010. Mogil'nik Mitino V–XIV vv. (Kaliningradszkaja oblast'). Materialy issledovanii. Chast' vtoraja. In: *Materialy ohrannykh arheologicheskikh issledovanij*, 15. Moskva.
- STANKUS, J., 1995. Bandužiu kapinyas. *Lietuvos arch.*, 12.
- STROBIN, J., 1995. Die Ornamentik des Metallschmucks aus dem Gräberfeld der Wielbark-Kultur in Lubowidz. In: R. WOLAĞIEWICZ, ed. *Lubowidz Ein birituelles Gräberfeld der Wielbark-Kultur aus der Zeit vom Ende des 1 Jhs. V. Chr. Bis zum Anfang des 3 Jhs.n. Chr.* MAB, I, 51–57.
- ZYMAŃSKI, P., 2005. Mikroregion osadniczy z okresu wpływyw rzymskich w rejonie jeziora Salęt na Pojezierzu Mazurskim. *Swiatowit. Supplement. Series P: Prehistory and Middle Ages*, X.
- TAUTAVIČIUS, A., 1978. *Lietuvos TSR archeologijos atlasas. I–XIII a. radiniai*, IV. Vilnius: Mokslas.
- TEMPELMANN-MAĆZYŃSKA, M., 1985. Die Perlen der romischen Kaiserzeit und der fruher Phase der Völkerwanderungszeit im mitteleurohaischen Barbaricum. In: *Römisch-Germanische Forschungen*, 43, Mainz am Rhein: Verlag Philipp von Zabern GmbH.
- TISCHLER, O., KEMKE, H., 1902. *Ostpreiſische Altertümer aus der Zeit der großen Graberfelder nach Christi Geburt*, Königsberg i. Pr.
- WOLAĞIEWICZ, R., 1995. Lubowidz. Ein birituelles Gräberfeld der Wielbark-Kultur aus der Zeit vom Ende des 1 Jhs. V. Chr. Bis zum Anfang des 3 Jhs.n. Chr., *Monumenta Archeologica Barbarica*, I, Kraków.
- ZIELING, N., 1989. *Studien zu germanischen Schilden der Spatlatene und der romischen Kaiserzeit im Freien Germanien*. British Archaeological Reports. International Series, BAR, 505 (III), Oxford.

Received: 20 January 2012; Revised: 8 March 2012;
 Accepted: 17 October 2012.

Appendix 1. Artefacts of Sambian-Natangian culture decorated with the Ring Decoration style

Type I (with segments of seven rings in a group)

Fibulae of A210-211 type

Bol'shoe Isakovo (formerly Lauth, Kr. Königsberg): graves 19 (one item), 40 (two items), 44 (two items)

Grebieten, Kr. Fischhausen: grave 102 (one item)

Greibau, Kr. Fischhausen: grave 156 (one item)

Kaliningrad oblastnoj (formerly Königsberg): grave 8/9 (one item)

Kovrovo (formerly Dollkeim, Kr. Fischhausen): grave 51a (one item)

Podgornoe (formerly Siehmonen, Kr. Instenburg): grave 7 (one item)

Putilovo (formerly Corjeiten, Kr. Fischhausen): graves 117 (one item), 267 (one item), 275 (two items), 276 (one item)

Stray finds: Dubravka (formerly Regehnen, Kr. Fischhausen), one item; Izobil'noe (Klein Fließ, Kr. Labiau), one item; Kuchmachjovo (formerly Tropitten, Kr. Königsberg), three items; Nalikajmy (formerly Lieckeim, Kr. Friedland), one item; Osokino (formerly Groß Waldeck, Kr. Preußisch Eylau), one item; Poddubnoe (formerly Fürstenwalde-Niedtkeim, Kr. Königsberg), one item; Rovnoje (formerly Pollwitten, Kr. Fischhausen), four items; Soldatovo (formerly Friedrichsthal, Kr. Wehlau), three items.

Literature: Heydeck 1888, p.246, Table VII; Günther, Voss 1880, No 410; Heydeck 1900, Table VI.2; Tischler, Kemke 1902, Table III.6; Åberg 1919, p.152ff; Gaerte 1929, Fig. 169.g; Nowakowski 1996, p.158ff; Skvortsov 2000, Figs. 27.11; 96.4-5; 186.49-50; KOIHM depository: KGOM 1/16708.101.

Fibulae of A167 type

Alejka 3 (formerly Jaugehnen, Kr. Fischhausen): grave 375 (one item)

Bol'shoe Isakovo (formerly Lauth, Kr. Königsberg): graves 26 (one item), 53 (one item), 55 (one item), 79 (one item), 78 (one item), 80 (one item), 88 (one item), 115 (one item), 120 (one item), 142 (one item), 152 (one item), 155 (one item), 180 (one item), 181 (one item), stray find from pit VI

Elanovka (formerly Wackern, Kr. Preußisch Eylau): grave 33 (one item)

Grebieten, Kr. Fischhausen: 98 (one item)

Greibau, Kr. Fischhausen: grave 128 (one item)

Tengen, Kr. Heiligenbeil: grave 24 (one item)

Gur'evsk (formerly Klein Heide): grave 13c (one item)

Gur'evsk-Novyj (formerly Trausitten, Kr. Fischhausen): grave 4 (one item)

Kotel'nikovo (formerly Warengen, Kr. Fischhausen): grave urn 2 (one item)

Kovrovo (formerly Dollkeim, Kr. Fischhausen): grave 46a (one item)

Pervomajskoe (formerly Wanikam, Kr. Heiligenbeil): grave 82 (one item)

Putilovo (formerly Corjeiten, Kr. Fischhausen): grave 11 (one item)

Stray finds: Hoh-Shnakeinen, Kr. Preußisch Eylau, one item; Krattlau, Kr. Fischhausen, one item; Siegesdicken, Kr. Fischhausen, two items; Tenkieten, Kr. Fischhausen, two items; Iskrovo (formerly Ringels, Kr. Fischhausen), one item; Morshanskoe (Schreitlacken, Kr. Fischhausen), one item; Rovnoje (formerly Pollwitten, Kr. Fischhausen), five items.

Fibulae of A168 type

Alejka 3 (formerly Jaugehnen, Kr. Fischhausen): grave 76 (one item)

Bol'shoe Isakovo (formerly Lauth, Kr. Königsberg): grave 80 (one item)

Literature: Berendt 1873, Table II.2; Tischler, Kemke 1902, p.40, Table III.14.17; Åberg 1919, p.152ff; Skvortsov 1995; 2000, Figs. 64.16; 268.16; 276.6; 2001, Figs. 132; 138.23; 144; 168.75; 264.38; 2002, Figs. 55.28; 78.6; 96.5; 2003, Figs. 40.2; 43.4; Khohlov 2010, Fig. 10; F. Jakobson, Archive, KOIHM depository.

Type I (with segments of two and three rings in a group)

Fibulae of A167 type

Alejka 3 (formerly Jaugehnen, Kr. Fischhausen): grave 148 (one item)

Bogatoe (formerly Pokalkstein, Kr. Fischhausen): grave B15 (one item)

Bol'shoe Isakovo (formerly Lauth, Kr. Königsberg): graves 11a (one item), 26 (one item), 40 (one item), 79 (one item), 115 (one item), 196 (one item)

Hrustal'noe (formerly Wiekau, Kr. Fischhausen): grave 29 (one item)

Former Grebieten, Kr. Fischhausen: graves t-1 (one item), 28 (one item), 32 (one item), 49 (one item)

Kotel'nikovo (formerly Warengen, Kr. Fischhausen): graves 12 (one item), 41 (one item)

Muromskoe (formerly Laptau, Kr. Fischhausen): stray find (one item)

III

BALT SOCIETIES:
AN ATTEMPT
TO PENETRATE
THE MIST

Fibula of A168 type

Bol'shoe Isakovo (formerly Lauth, Kr. Königsberg): grave 53 (one item)

Literature: Tischler, Kemke 1902, p.37, Table III.20; Skvortsov 1999, Fig. 112.6; 2000, Figs. 96.20; 268.5; 2001, Figs. 132.21; 264.6; 2003, Fig. 115; 2004/2005, Fig. 31.17; Jakobson, Archive; KOIHM depository.

Fibula of A161 type from Povarovka (formerly Kirpehnen, Kr. Fischhausen), stray find (one item).

Literature: Åberg 1919, p.153.

Fibula of *Große Armbrustfibeln* type, formerly Tenkieten, Kr. Fischhausen, grave 48: one item

Literature: F. Jakobson, Archive.

Neck-ring from Povarovka (formerly Kirpehnen, Kr. Fischhausen): one item

Literature: Bezzenberger 1904, p.79, Fig. 97.

Type I.1

Fibulae of A167 type

Bezymjanka (formerly Nuskern, Kr. Fischhausen): grave 15 (one item)

Bol'shoe Isakovo (formerly Lauth, Kr. Königsberg): grave 94 (one item)

Grebieten, Kr. Fischhausen: 123 (one item)

Greibau, Kr. Fischhausen: grave 55 (one item)

Gur'evsk (formerly Klein Heide): grave 12c (one item)

Kotel'nikovo (formerly Warengen, Kr. Fischhausen): grave 8 (one item)

Stray finds: Rosenau, Kr. Königsberg, one item; Sinjavino (formerly Kampuskemen, Kr. Gumbinen), one item; Putilovo (formerly Corjeiten, Kr. Fischhausen), one item.

Literature: Berendt 1873, Table III.4; Günther, Voss 1880, Nos 402-403; Heydeck 1909, p.230; Skvortsov 1995; 2001, Fig. 186; H. Jahnkuhn, F. Jakobson, Archives; MVF.

Artefacts ornamented with decoration of Type I.2

Fibulae of A167 type

Alejka 3 (formerly Jaugehnen, Kr. Fischhausen): grave 58 (one item)

Kovrovo (formerly Dollkeim, Kr. Fischhausen): grave 368 (one item)

Stray finds: Kotel'nikovo (formerly Warengen, Kr. Fischhausen), one item; Orekhovo (formerly Schuditten, Kr. Fischhausen), one item.

Literature: Åberg 1919, p.19, Fig. 10; Gaerte 1929, Fig. 169.g; Nowakowski 1996, Table 106.4; Kulakov 2007, Fig. 213.1; H. Jahnkuhn, Archive; KOIHM depository.

Pin from Dobroe (formerly Hünenberg bei Rantau, Kr. Fischhausen): grave 277 (one item)

Literature: Khomiakova 2010b, p.138, Fig. 5.16; KOIHM depository: KGOM 1/76305.42.

Neck-rings from the former Prussia-Museum collection (Sambia, unknown place): stray finds (two items)

KOIHM depository.

Fibulae of Rosettenfibeln type

Former Grebieten, Kr. Fischhausen: grave 177 (one item)

Bol'shoe Isakovo (formerly Lauth, Kr. Königsberg): grave 78 (one item)

Ushakovo (Brandenburg, Kr. Heiligenbeil): stray find (one item)

Literature: Hejdeck 1888, p.224, Table 5; Skvortsov 2001, Fig. 138. 32; Kulakov 2009, p.97ff, Fig. 3.1 a-g; Lund Hansen, Przybyła 2010, p.278; KOIHM depository.

Type II

Fibulae of *Große Armbrustfibeln* type (made of bronze with knobs at the spring ends and a simple bow-head)

Berezovka (formerly Groß Sausgarten, Kr. Preußisch Eylau): grave 1 (one item)

Bol'shoe Isakovo (formerly Lauth, Kr. Königsberg): graves 23 (one item), 71 (two items), 84 (one item), 89 (one item), 97B (two items), 158 (three items), 160 (two items), 184 (one item), 192 (one item), 197 (one item)

Grebieten, Kr. Fischhausen: graves 1907-B (one item), 1902-27 (one item), 1907-36 (one item), 1907-46 (one item), 1907-VIII (one item), 13 (one item), 51 (one item)

Gerojskoe 5 (formerly Eislieten, Kr. Fischhausen): grave 261 (one item)

Gur'evsk-Novyj (formerly Trausitten, Kr. Fischhausen): grave 12 (one item)

Kovrovo (formerly Dollkeim, Kr. Fischhausen): graves 41 (two items), 70 (one item), 71 (two items), 140 (one item), 258 (one item), 260 (one item), stray find from pit XVI (excavations by V.I. Kulakov)

Ljublino (formerly Serappen, Kr. Fischhausen): grave 24 (one item)

Pervomajskoe (formerly Wanikam, Kr. Heiligenbeil): grave 25 (one item)

Podgornoe (formerly Siehmonen, Kr. Instenburg): grave 25 (one item)

Former Tenkieten, Kr. Fischhausen: graves 48 (one item), 57 (one item), 159 (two items)

Stray finds: Bezymjanka (formerly Nuskern, Kr. Fischhausen), two items; Hoh-Shnakeinen, Kr. Preußisch Eylau, one item; Pionerskij (formerly Rantau, Kr. Fischhausen), one item; Povarovka (formerly Kirpehnen, Kr. Fischhausen), one item; Rovnoje (formerly Pollwitten, Kr. Fischhausen), one item; Sirenevo (formerly Eisselbitten, Kr. Fischhausen), one item.

Literature: Günther, Voss 1880, p.92, Nos 395, 398, 400; Tischler, Kemke 1902, Tables III.15.21–23; Åberg 1919, p.152; Nowakowski 1996, Table 84.3; Skvortsov 2000, Figs. 46.5, 98; 2001, Figs. 154.12, 175.5, 10, 197; 2002, Fig. 122.8, 12; 2003, Figs. 57.2–3, 5–6, 89.2; Khomiakova, 2007, Fig. 1.1–4; Kulakov 2009, Figs. 20.2, 24.4, 193.16; F. Jakobson, Archive.

Fibulae of *Große Armbrustfibeln* type (made of iron with silver rings)

Bol'shoe Isakovo (formerly Lauth, Kr. Königsberg): graves 44 (one item), 111 (one item)

Grebieten, Kr. Fischhausen: grave 92 (one item)

Kovrovo (formerly Dollkeim, Kr. Fischhausen): grave 306 (one item)

Prigorkino (formerly Carben, Kr. Heiligenbeil): grave 6 (one item)

Tenkieten, Kr. Fischhausen: grave 23 (one item)

Literature: Skvorzov 2003, Fig. 251; 2004/2005, p.137, Table 52.48; Kulakov 2007, p.27, Fig. 104.10; F. Jakobson, Archive; KOIHM depository: KGOM 1/12753.1; 16742.10.

Fibulae of *Große Armbrustfibeln* type (with O-shaped foot)

Gerojskoe 5 (formerly Eislieten, Kr. Fischhausen): grave 194 (one item)

Grebieten, Kr. Fischhausen: grave 1907-108 (one item), 45 (one item), t (one item)

Povarovka (formerly Kirpehnen, Kr. Fischhausen): stray find (one item)

Literature: Jentsch 1896, Table II; Nowakowski 1996, Table 84.1; F. Jakobson, Archive.

Neck-ring from Bol'shoe Isakovo (formerly Lauth, Kr. Königsberg), grave 44 (one item)

Literature: Skvorzov 2004/2005, p.137, Table 51.4.

Type II.1

Fibulae of *Große Armbrustfibeln* type (with three knobs)

Elanovka (formerly Wackern, Kr. Preußisch Eylau): grave 31 (one item)

Kovrovo (formerly Dollkeim, Kr. Fischhausen): graves 49 (one item), 85 (one item)

Kotel'nikovo (formerly Warengen, Kr. Fischhausen): grave 33 (one item)

Mohovoe (formerly Kaup bei Wiskiauten, Kr. Fischhausen): stray find (one item)

Literature: Günther, Voss 1880, No 407; Tischler, Kemke 1902, pp.21, 30, Table III.19, 21, 23; Åberg, 1919, p.153; Gaerte 1929, Fig. 169.g; Nowakowski 1996, Table 106.4; Kulakov 2009, p. 97ff, Fig. 3.1 a-g.

Type III

Fibulae of *Große Armbrustfibeln* type

Bol'shoe Isakovo (formerly Lauth, Kr. Königsberg): graves 49 (one item), 100 (two items), 110 (two items), 146 (one item)

Dobroe (formerly Hünenberg bei Rantau, Kr. Fischhausen): grave 204 (three items)

Grebieten, Kr. Fischhausen: grave 26 (two items)

Elanovka (formerly Wackern, Kr. Preußisch Eylau): grave 18 (one item)

Greibau, Kr. Fischhausen: grave 203a (one item)

Kovrovo (formerly Dollkeim, Kr. Fischhausen): grave 299 (one item)

Pervomajskoe (formerly Wanikam, Kr. Heiligenbeil): grave 34 (one item), 61 (one item), 82 (one item)

Stray finds: Greibau, Kr. Fischhausen one item; Pesochnoe (formerly Detlevsruh, Kr. Friedland), one item; Pervomajskoe (formerly Wanikam, Kr. Heiligenbeil), one item.

Literature: Günther, Voss 1880, No 404; Tischler, Kemke 1902, pp.39, 43ff, Tables III.13, 24, 26; Åberg 1919, p.13, Fig. 5; Skvortsov 2000, Fig. 245.6-7, 10; 2001, Figs. 214, 246; 2002, Fig. 179.5; Kulakov 2005a, Fig. 45; 2007, Fig. 92.1; F. Jakobson, Archive; KGOM 1/16880.1–2; MVF 12370/12, 12371.

Olga Khomiakova
Institute of Archaeology
Dm. Ulianova St 19, 17036 Moscow
Russia
E-mail: olga_homsy@mail.ru

III

BALT
SOCIETIES:
AN ATTEMPT
TO PENETRATE
THE MIST

SAMBIJOS–NOTANGIJOS KULTŪROS PUOŠYBOS ŽIEDELIAIS STILIUS KAIP VĒLYVOJO ROMĒNIŠKOJO LAIKOTARPIO BALTIJOS REGIONO ELITO KONTAKTŲ PRIEMONĒ

OLGA CHOMIAKOVA

Santrauka

Vienu iš Baltijos regiono elito kontaktų indikatorių įprasta laikyti įvairius juvelyrinių dirbinių gamybos stilius. Šiame kontekste ypatinga vieta tenka puošybos žiedeliais stiliui (vok. *Ringgarnitur Still*). Jis plačiai paplinta vėlyvojo romėniškojo laikotarpio Sambijos–Notangijos kultūroje ir yra vienas iš šios kultūros laikotarpio požymių. Įvairūs puošybos žiedeliais elementų deriniai (1 pav.) ne tik parodo stiliaus galimybes, bet kartu šis puošybos stilius yra chronologinis indikatorius (6 pav.), apibrėžiantis vietos bendruomenių kontaktus su pietinės Skandinavijos, Baltijos jūros salų ir su Vyslos žemupio gyventojais.

Iš vielos su įkartomis suktais žiedeliais buvo puošiami įvairūs papuošalai: segės (tipai A 210–211, A 167, große Armbrustfibel tipo), smeigtukai ir antkaklės (2–5 pav.). Dirbinių analizė leidžia teigti, kad didžioji dalis daiktų, puoštų iš vielos suktu dekoru, genetiškai artimi Vielbarko (Wielbark) dirbiniams (6: 1 pav.), bet tai ne vienintelė įtaka. Daliai daiktų analogiškų dirbinių randama Baltijos jūros salose ir Šiaurės Vokietijoje. Jie puošti charakteringa Himlingøje ir Haßleben-Leuna kapų horizontų stilistika. Šie palaidojimai priklauso giminingiems junginiams, vaidinusiems pagrindinį vaidmenį Baltijos regiono mainuose, ypač suintensyvjusiuose III a. antrojoje pusėje. Tai gali būti vienas iš įrodymų, kad Pietryčių Baltijos regionas (kaip ir Vyslos delta) buvo įtrauktas į kontaktų su Baltijos jūros salomis sistemą, susiklosčiusią vėlyvuju romėniškuoju laikotarpiu. Be dirbinių, dekoruotų žiedeliais, šiuose Sambijos–Notangijos kultūros kapuose randama daiktų, kurių analogijos germanų kapų inventoriuje pabrėžia aukštą socialinį statusą (7 pav.).

Puošybos žiedeliais Pietryčių Baltijos regione pasirodymas gali liudyti, kad germanų ir vakarų baltų elito kontaktai buvo ne tik apsikeitimo dovanomis lygio (ką lemia importas ir prestižiniai daiktai), bet galimas stiliaus ir „mados“ perėmimas. Šių kontaktų rezultatu galėjo tapti ir žiedelinės puošybos stilius – iš pradžių kartu su importuotais daiktais (ant dirbinių,

laikomų prestižiniais), o vėliau naudotas ir vietiniams gaminiams, besiskiriantiems ne tik morfologiniais požymiais, bet ir gaminių medžiaga (bronzą) bei stilistiniais savitumais. Čia verta pabrėžti, kad vakarų baltų juvelyrai ne tiesiog atkartojė atvežtinius pavyzdžius, jie sugebėjo pabrėžti savo gebėjimus, Šiaurės Europos filigrano stiliaus ir Vielbarko juvelyrinių tradicijų pagrindu sukurdami savitą dekorą variantą, kuris ilgą laiką apibrėžė ne tik Sambijos–Notangijos kultūros, bet ir kitų baltų genčių papuošalų pobūdį.

Vertė Audronė Bliujienė