

# NEW TRACES IN OLD BARROW. A REINTERPRETATION OF PARTICULAR FINDS FROM BARRROW 2 AT SZWAJCARIA CEMETERY (SUDOVIAN CULTURE)

**BARTOSZ KONTNY**

## Abstract

The author recalls the famous princely Sudovian culture grave at Sz wajcaria (today within the administrative limits of Suwałki). Apart from presenting the grave furnishings according to up-to-date typological standards, he tries to reinterpret particular finds, identifying the metal fittings of a saddle and the metal mountings of a possible leather bucket aimed at hiding a horse harness. Additionally, an engraved ornament spotted on the head of a shafted weapon Type Vennolum/Ilkjær 15 is presented.

Key words: Sudovian culture, princely grave, Sz wajcaria, saddle, horse gear, Vennolum.

## The princely grave at Sz wajcaria

The most opulent internment of Sudovian culture in the cemetery at Sz wajcaria, barrow 2, grave 1, was published years ago, and discussed several times, particularly because of the weapons found there (Antoniewicz *et al.* 1958, pp.23-31, pl. I-IX; Antoniewicz 1962, p.198ff; Nowakowski 1994, p.385, Fig. 2.10; 2007, p.86; von Carnap-Bornheim, Ilkjær 1996, pp.320, 477; Biborski, Ilkjær 2006a, p.195, Table 15; 2006b, p.388; Miks 2007b, p.739, pl. 113.A717; Kontny 2007, pp.125ff, 128, Fig. 5, 8:b). Although it demands a thorough study and detailed publication comparable to those devoted to the princely graves at Gommern (Becker 2010) or Mušov (Peška, Tejral 2002), I would like to discuss only a few items found there. Let me recall that the barrow was circular, 0.4 to 0.9 metres high (lower in the centre), 21 metres in diameter, and topped with a four to five-layer stone cover. Beneath the three-by-one-metre stone paving was a grave pit 4.1 by 1.3 metres. Inside, a 55-year-old male lay on his back, oriented along a southeast-northwest axis (Fig. 1). On his left were found a sword in a scabbard, an axe, a shield boss and a snaffle bit with horse harness mounts, that is, rhomboid strap connectors. A pair of spurs was found by the feet. Brooches, tweezers and a single strap end were located by the chest, scissors to the left of the head, and a comb to the right. The two

heads of shafted weapons referred to and a second bridle with horse harness fittings were situated around 40 centimetres further away, beyond the skull. We should enumerate here also the concentration of metal fittings of an unknown function at foot level, to the left of the deceased. As regards the grave furnishings, we should enumerate the following specimens:

1. An iron two-edged sword Type Folkeslunda-Zaspy, Subtype 1 after M. Biborski and J. Ilkjær (2006a), or Type Lauriacum-Hromówka, Variant Hromówka after C. Miks (2007a), with a small bone pommel, in a scabbard made of oak and leather equipped with an iron scabbard slide close to Type Kaczanowski VII (1992).
2. Two bronze strap connectors (covered with silver) aimed at fastening the sword.
3. Balteus fittings: one silver in the shape of a *Cervidae* animal (the general shape of a deer, the antlers of an elk), three circular bronze plates fitted with silver and gilded impressed foil, one bronze silvered shield grip shaped, one bronze silvered rectangular, with washer, one bronze silvered crescent.
4. A silver balteus buckle Type Madyda-Legutko D17 (1986).
5. An iron axe with a symmetrical edge, small.

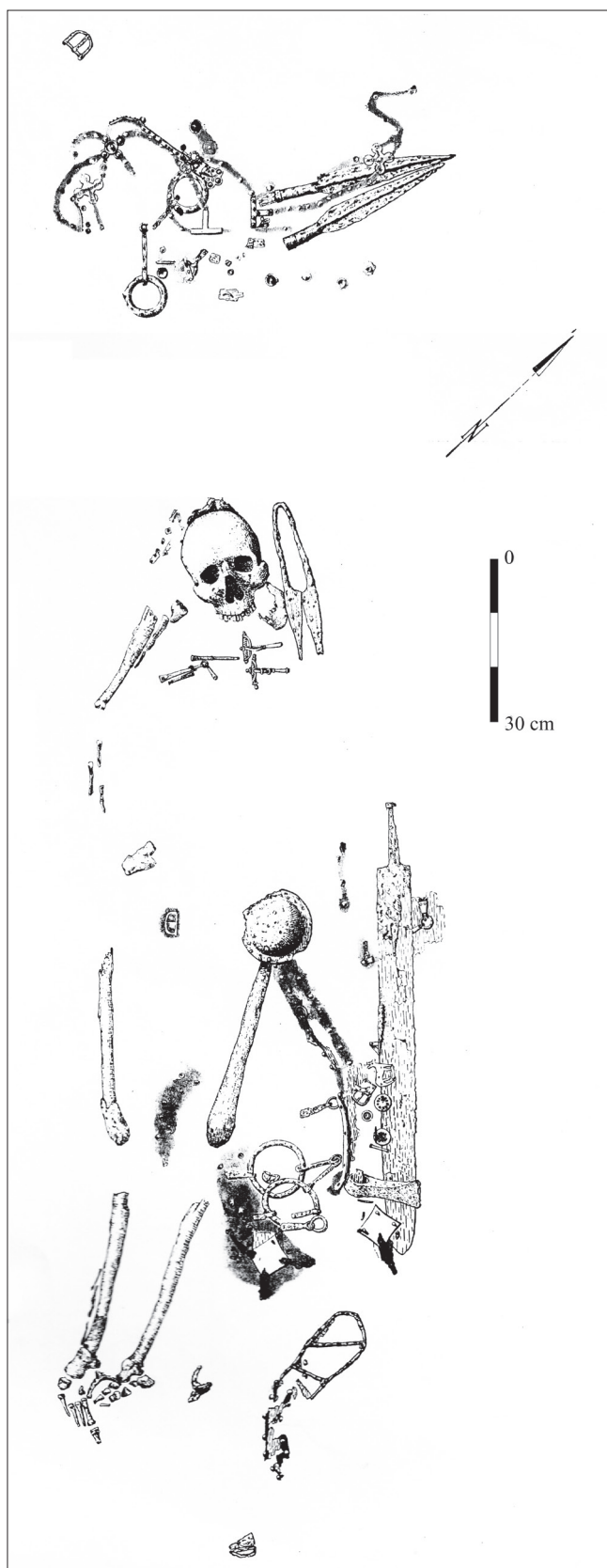


Fig. 1. A plan of grave 1 from barrow 2 in Szwajcaria (after Antoniewicz *et al.* 1958, pl. I).

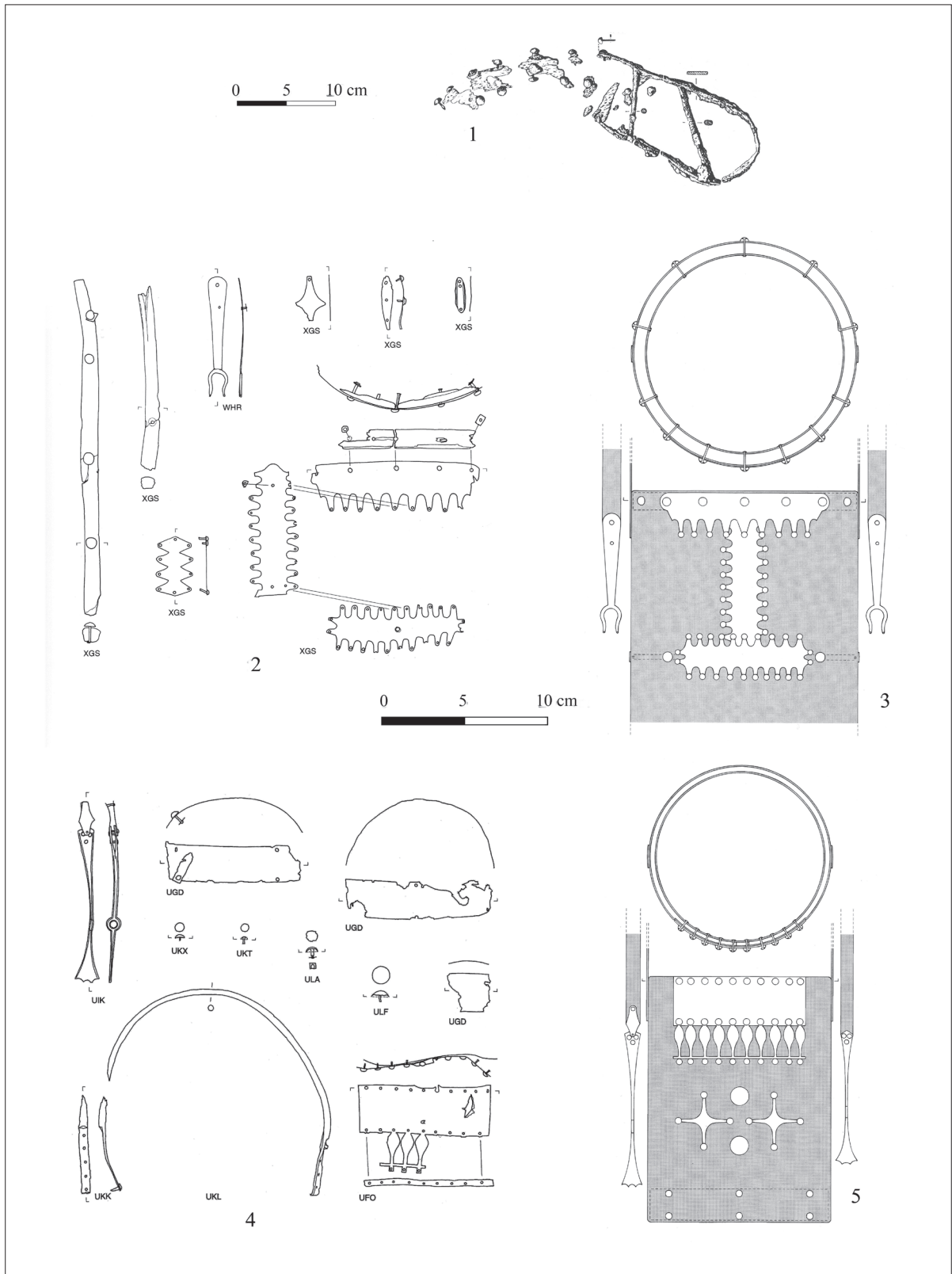


Fig. 2. A leather bucket (?) from Sz wajcaria, barrow 2, grave 1 and analogies: 1 the remains of a possible bucket found in Sz wajcaria (after Antoniewicz *et al.* 1958, pl. VI.1); 2 preserved elements of the bucket SAKX from the Illerup bog site (after von Carnap-Bornheim, Ilkjær 1996, Fig. 75); 3 a reconstruction of the bucket SAKX from the Illerup bog site (after von Carnap-Bornheim, Ilkjær 1996, Fig. 76); 4 preserved elements of the bucket SAKO from the Illerup bog site (after von Carnap-Bornheim, Ilkjær 1996, Fig. 109); 5 a reconstruction of the bucket SAKO from the Illerup bog site (after von Carnap-Bornheim, Ilkjær 1996, Fig. 110).

6. An iron head of a shafted weapon Type Ilkjær 15/Vennolum (Ilkjær 1990), ornamented with a zigzag engraved pattern.
7. An iron head of a shafted weapon Type Kaczanowski XV (1995) damascened with silver solar, lunar and s-shaped motifs, and a rivet of a socket decorated with silver notched wire.
8. An iron shield-boss type Jahn 8 (1916)/Zieling D (1989).
9. Two iron spurs Type Szwajcaria after U. Giesler (1978).
10. An iron bridle bit Type 1C1, 2B after M. Ørnesnes (1993) with two pairs of ferrules (rein and cheekpiece).
11. Headgear fitted with two bronze rhomboid connectors topped with silver impressed foil.
12. An iron bridle bit Type 1C1, 2C after M. Ørnesnes (1993).
13. Headgear of twisted leather straps with bronze fittings: three rosette-like four-armed connectors, two T-shaped connectors, rectangular strap mounts and several nails with hemispherical heads of the headpiece, noseband, browband and central strap, ornamental fitting of the central strap with motifs of a human head and bird scavenger head.
14. A piece of an iron knife.
15. A silver belt buckle close to Type E after R. Madyda-Legutko (1986).
16. An iron belt buckle close to Type E14 after R. Madyda-Legutko (1986).
17. An iron belt buckle close to Type D30 after R. Madyda-Legutko (1986).
18. Three bronze silvered strap ends close to Type 6.1 after R. Madyda-Legutko (2011).
19. A bronze strap end close to Type 2.6 after R. Madyda-Legutko (2011).
20. Two bronze brooches fitted with notched silver wire, Type Almgren 167 (1923).
21. Two bronze tweezers.
22. An antler comb Type II after S. Thomas (1960).<sup>1</sup>

<sup>1</sup> Based on a chronology of the equipment, we may attribute grave 1 at barrow 2 to Phase C<sub>1b</sub> (see Ilkjær 1990, p.387; von Carnap-Bornheim, Ilkjær 1996, pp.320, 477; Biborski, Ilkjær 2006a, p.195; 2006b, p.388; Kontny 2007, p.125ff).

## Bucket?

To this, we should add a flat u-shaped iron fitting with two diagonal rods sticking to it, as well as several bronze nails with hemispherical heads, situated nearby in pairs stretching along a line (Fig. 2.1). The nails were stuck in the remains of wood of unknown species, covered with leather at a distance of 2.5 to three centimetres from one another, at right angles. One of the nails was situated at the end of the u-shaped fitting (18 centimetres in length, seven to eight centimetres in width, and around two centimetres in breadth), with which the wood remnants were also connected. Nearby, at a distance of 14 centimetres, an iron buckle was found, but its original shape is not known. Unfortunately, the verification of the original shapes of fittings and buckles is impossible, as their state of preservation today is not sufficient to make any statements.<sup>2</sup> However, we should admit that an old publication included quite a precise description of the iron and wooden elements, together with a drawing (Antoniewicz *et al.*, 1958, p.26ff, pl. VI:1). Its authors were unable to determine its function. They only considered the possibility that it was a quiver, but did not include this assumption in the publication.<sup>3</sup> Nowadays, such assumptions may be rejected: the quivers we know from bog finds (Nydam, Vimose, possibly also Illerup and Kragehul) or singular grave finds (Högom, Medelpad, Sweden, and Altdorf, Canton Uri, Switzerland) dated to the Roman Period and the Migration Period were tubular in shape, and made of wood, bark or leather, without any metal fittings (Rau 2007, with further literature). Also, nomadic-type quivers cannot be compared with the fittings from Szwajcaria: nomads (east Indo-Iranians) used goritos to hide arrows and a bow, as is shown on the first-century BC to first-century AD<sup>4</sup> battle plaque from barrow 2 at Orlat, Uzbekistan (Pugachenkova 1989, Fig. 71; Ilyasov, Rusanov 1998, pl. IV:1; Nikanorov and Khudyakov 2013), frequent representations in Bosporan frescoes and gravestones at Kerch (Istvánovits, Kulcsár 2001, p.153, Fig. 10.4, 9-10), or Medieval plaques from Tepsey on the River Yenisey (Gryaznov 1979, Fig. 61; Khudyakov 1990,

<sup>2</sup> The items from barrow 2 are kept in the State Archaeological Museum in Warsaw, the Section for the Archaeology of the Balts (inventory no PMA/IV/4498). I would like to express my gratitude to Anna Bitner Wróblewska PhD for letting me work with these materials.

<sup>3</sup> Personal communication: the late Professor Jerzy Okulicz-Kozaryn, to whom I am very grateful for the discussions concerning Szwajcaria.

<sup>4</sup> As for chronology, see Bernard and Abdullaev 1997, pp.75-84.

## II

SOCIETIES OF THE PAST: APPROACHES TO BURIAL CUSTOMS AND GRAVE GOODS

Fig. 2). However, apart from the Scythian-type bow<sup>5</sup> together with goritos, another form of cylindrical quiver was also used by the Sarmatians.<sup>6</sup> This is proven by particular representations of Trajan's column or the Bosporan gravestone of Psycharion's son Daphnos (Istvánovits, Kulcsár 2001, p.153, Fig. 10.12-13), and also archaeological finds: a few quivers from the north Pontic zone show the prevalence of cylindrical quivers of birch bark, wood or leather, sometimes with traces of paint (Simonenko 2001, p.199ff), which is evidenced not only by further Sarmatian finds but also by Parthian or Sassanid representations (Khazanov 1971, p.42). It is also possible that biconically shaped quivers were in use, as is suggested by the late first-century AD gravestone of Flavius Proculus from Philadelphia, now in the Mainz Landesmuseum (Dixon, Southern 1992, p.54, Fig. 23)<sup>7</sup>. This form also became typical of Xiongnu/Hunnic (Brosseder, Miller 2012, p.123ff, Figs. 7, 15) and Avaric armaments (Daim 2003, p.492; Riesch *et al.* 2012, p.194ff, Figs. 28-33).

Based on quite a precise presentation of finds *in situ*, I would like to propose another interpretation of the puzzling remains at Sz wajcaria, barrow 2. The most probable possibility I am able to point out at the moment is that we are dealing with the remains of organic (mostly leather) buckets known from the Scandinavian bog site at Illerup (Fig. 2.2-5). A few buckets aimed at hiding a horse harness and a bridle bit were found in that Danish sacrificial deposit (von Carnap-Bornheim, Ilkjær 1996, p.260ff); their almost complete absence in other bog sites<sup>8</sup> may be explained by the fact that Illerup is the only big site abundant in organic materials that has been excavated according to modern methodologies. However, there are no two identical leather buckets from Illerup; there were repeatedly used parts to strengthen their construction, that is, trough-shaped edge fittings, wooden edge covers fixed with nails,

small but numerous rhomboid metal mountings, openwork rectangular fittings, or bands of iron sheet. Their main task was to join the edges of the leather (rhomboid plaques), or to hold the bucket's mouth (trough-shaped fittings, wooden objects and band mountings); only openwork rectangular plaques were intended specifically to adorn. Additionally, small buckles and strap ends were traced together with the buckets, serving as parts of a leather carrying strap. We may find representatives of particular groups in Sz wajcaria, barrow 2. Analogies to them could be found in the Illerup finds, specifically inv. no. SARE (von Carnap-Bornheim, Ilkjær 1996, Fig. 162-163, pl. 212), SASL (von Carnap-Bornheim, Ilkjær 1996, Fig. 119-120, pl. 156), SAKO (von Carnap-Bornheim, Ilkjær 1996, Fig. 109-110, pl. 148) and SAKX (von Carnap-Bornheim, Ilkjær 1996, Fig. 75-76, pl. 106). Naturally, there are no identical parallels in Scandinavia, but there was also no uniform model among Scandinavian buckets. Additionally, strap ends from leather straps used to carry a bucket of Scandinavian type were absent in Sz wajcaria, but they were not inevitable (they could have been substituted by equally functional exclusively leather straps, maybe with an iron buckle, remains of which were spotted in Sz wajcaria). Furthermore, we cannot exclude the possibility that we are dealing with a Scandinavian inspiration only, not a real import. We cannot avoid the question why the proposed bucket fittings were located in a position far from the original. In my opinion, it could be accounted for by the fact that the bucket construction was fragile, not durable enough to survive pressure on the grave filling (the grave pit did not include any chamber construction, so the bucket had to be covered and destroyed at once, while filling the pit with earth).<sup>9</sup> We are probably dealing with the remains of a smashed container, not a 'normally' decomposed one: that is why iron rods were found between (or beneath?) the band mounting, and a nailed wooden list was placed a certain distance from them. Naturally, the above identification is only hypothetical, but I consider it to be the most plausible at the moment. Moreover, it is corroborated by the context: it was situated in the 'horse equipment zone' of the grave: to the left of the legs, at the level between the feet and the knees, together with the horse harness and the next rider's equipment described below.

<sup>5</sup> It should be noted that the term 'Scythian type' is not a real ethnic denominator value in the times in question, as Late Scythian quivers were also cylindrical in shape (see Puzdrovskiy 2007, p.135).

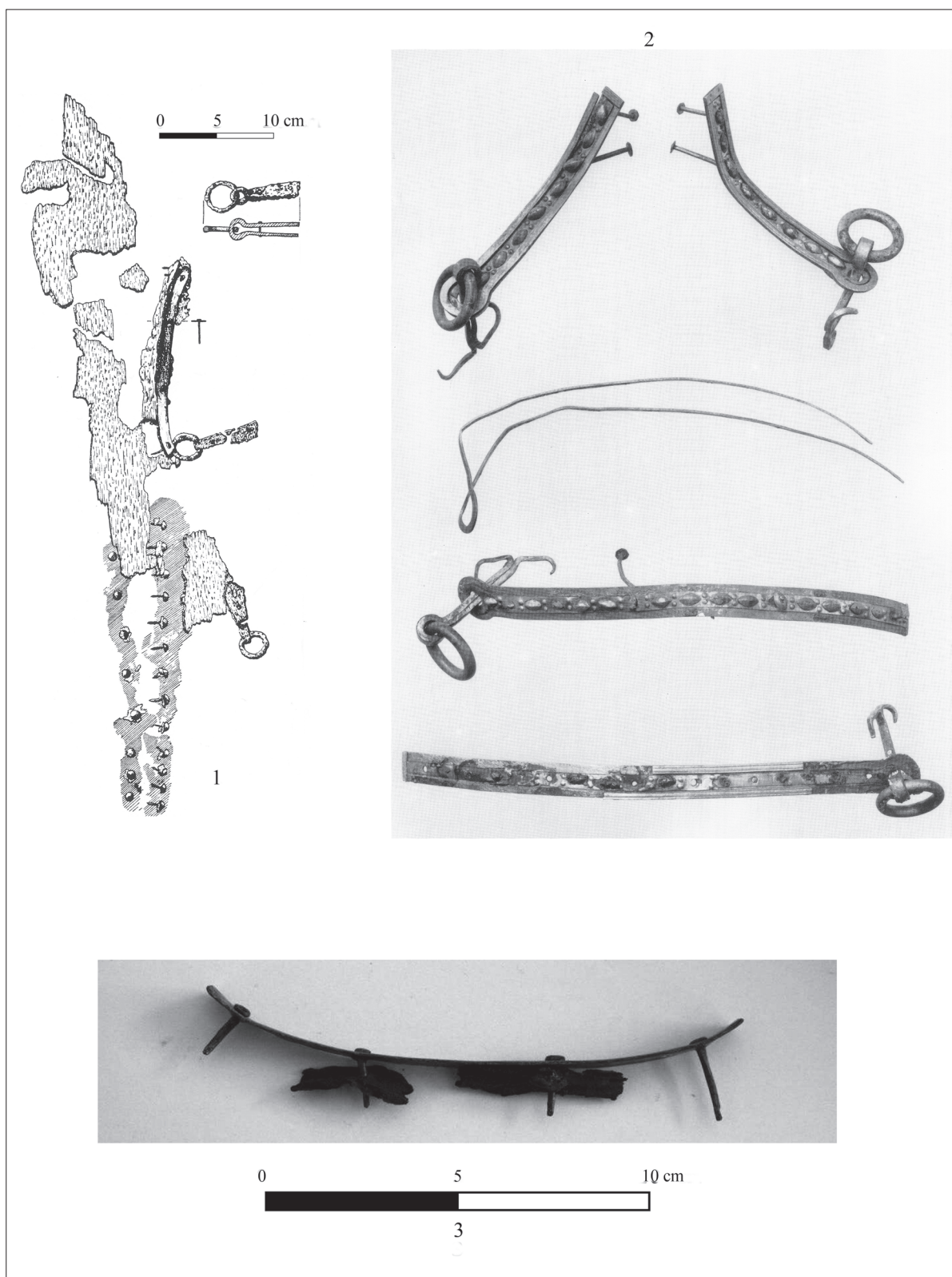
<sup>6</sup> Some suggest that there were Roxolans who expressed a more conservative attitude, utilising Scythian-type bows and goritos, while Jazygian warriors used tubular quivers (Istvánovits, Kulcsár 2001, p.153) but it rather seems that both solutions were popular in a Sarmatian milieu.

<sup>7</sup> See also Coulston 11985

<sup>8</sup> Further traces of buckets (von Carnap-Bornheim, Ilkjær 1996, p.262) were identified only in Nydam, a fragment of the wooden list with nails and front mounting (Engelhardt 1865, pl. V.23, 25), and Vimose, characteristic strap ends (Engelhardt 1869, pl. 15.20-22).

<sup>9</sup> Even in the case of the Illerup finds, the buckets were reconstructed hypothetically to a certain degree, as their fittings were found scattered.





II  
 SOCIETIES  
 OF THE PAST:  
 APPROACHES  
 TO BURIAL  
 CUSTOMS  
 AND GRAVE  
 GOODS

Fig. 3. The saddle from Sz wajcaria, barrow 2, grave 1, and analogies: 1 the remains of the saddle found in Sz wajcaria (after Antoniewicz *et al.* 1958, pl. VI.2); 2 fittings of saddle I from Ejsbøl North bog site (after Ørsnes 1988, pl. 185); 3 the contemporaneous state of preservation of saddle remnants from Sz wajcaria (1, 3 wood, leather and iron, 2 bronze) (photograph by Bartosz Kontny).

## Saddle

Another group of finds of unclear destiny was situated over 20 centimetres to the northwest, that is, close to the sword, shield, axe and horse harness (Fig. 3.1). It consisted of wooden remains (unidentified species) in an elongated position, covered with leather fixed with two rows of bronze nails, at right angles to each other (in all, 21 survived). From the northwest, it is confined with an iron fitting of rectangular, elongated iron band around 17 centimetres long, with outcurved terminals. It was fastened to the wood with a few iron nails, which were also to replace the layer of leather between the wood and the iron fitting (Fig. 3.3). The whole set is quite long, measuring around 60 centimetres, but its original shape cannot be established. Close to one of its ends, an iron ring with an elongated ferrule was located, and the next one, with a rivet connecting two parts of the ferrule, was found a few centimetres from another terminal. The third item of that type was arranged sticking to a patch of wood, several centimetres to the northwest of the first one. Its morphological similarity to the others makes the assumption that it is linked to the shield (situated nearby) not very possible. In my opinion, we are dealing with the remains of a saddle. As we know about few examples of barbarian saddles dated to the Younger Roman Period from north European bog sites, their exact reconstruction is impossible, as to their poor state of preservation.<sup>10</sup> Nevertheless, particular groups of fittings are unequivocally connected with saddles. Specifically, these are rectangular fittings (Fig. 3.2) similar to the one from Szwajcaria, though frequently more ornamental and equipped with loops (used for fastening saddles to horses' backs) fixed with rivets or anchor-like terminals: Thorsberg (Engelhardt 1863, pl. 18.16), Illerup Place A (here also elongated pieces of wood with triangular cross-section, see von Carnap-Bornheim, Ilkjær 1996, List 3) and Vingsted (von Carnap-Bornheim, Ilkjær 1996, p.272ff, pl. 115) as well as Ejsbøl North (Ørsnes 1988, p.93ff, pl. 184-190). Some of them were shorter, and these are mostly bent. In trying to reconstruct their original position, we may also use the later Migration Period finds from Scandinavia, characterised by similar designs of saddles, e.g., the Sösdala votive find in Skåne (Norberg 1931, p.109, Fig. 5-7, 14; Holmquist 1951, p.109, Fig. 51-54), Å-mosse also in Skåne (Holmquist 1951, p.110, Fig. 55), Vennebo (Holmquist 1951,

<sup>10</sup> Based on fragmentary finds from Illerup, C. von Carnap-Bornheim and J. Ilkjær postulate only two types of saddles: with wooden frame and fittings with loops, and simple saddles without a frame, only with padding (von Carnap-Bornheim, Ilkjær 1996, p.272).

p.107ff, Fig. 47-49), Långhem (Holmquist 1951, Fig. 56) and Finnestorp, all three in Västergötland (Nordquist 2007, p.231ff, Fig. 6.3), as well as Jönköping (Kanalgatan) in Småland (Holmquist 1951, p.110, Fig. 58; Arrhenius 1987, p.464ff, Fig. 11.10). It seems that shorter fittings were to strengthen the edges of a pommel (convex fittings with loops), including its lower parts, sticking at least to part of a seat (shorter ones with outcurved terminals). The latter type could also have been placed singly, in the central part of a pommel, with a loop upwards. The longer mountings could rather be used as reinforcements of the seats' edges. Naturally, the parts we know from Szwajcaria are not identical to the Scandinavian ones: there are no shorter fittings, the elongated mounting is simply iron, and the loops were fixed in a different way, probably with leather straps. It plausibly expresses its local character, e.g., very similar loops with elongated ferrules were used as an element of a horse harness, probably the reins, in the Dollkeim-Kovrovo culture horse grave in the cemetery at Izobil'noe, ray. Polessk, formerly Klein-Fließ, Kr. Labiau (Heydeck 1900, p.58, pl. V).<sup>11</sup> Nevertheless, we are dealing with a saddle: one of its edges had to be added with a rectangular sheet, and another thicker edge with a leather cover fitted with a double line of nails (therefore, the rows are arranged at a right angle).<sup>12</sup> Unfortunately, I cannot propose any detailed reconstruction, because of the large amount of mixed organics in that part of the grave. The situation of loops with ferrules (probably used for fastening the girth, maybe with a breast strap and a breech strap) suggest that its edge (or the edges of the seat and pommel) were close to the left side of the deceased, so the saddle spread to the east or northeast, but the uncertainty even as to the original position of the saddle (horizontally or on its side) does not allow us to make a conclusion on that question.<sup>13</sup>

<sup>11</sup> The ferrules of a horse harness adjoining the saddle from Szwajcaria possess the same shape; therefore, the discussed fittings, not attributed to a horse harness, have to be of a different character than a part of horse headgear.

<sup>12</sup> Although similar nails were used in the case of the item formerly presented (possibly a bucket), the probability that it was also a saddle is rather excluded, as the other fittings have no parallels among saddle mounts.

<sup>13</sup> We should underline the fact that we are dealing with one of the earliest saddles proven for the Barbaricum. Naturally, their use was possible slightly earlier; see finds of girth buckles from Dollkeim-Kovrovo culture, e.g., Aleyka 3, grave 418 (see Skvorcov 2012, Fig. 3:9). Unfortunately, there were no fittings found there, so maybe they served as a saddle-cloth fixing.



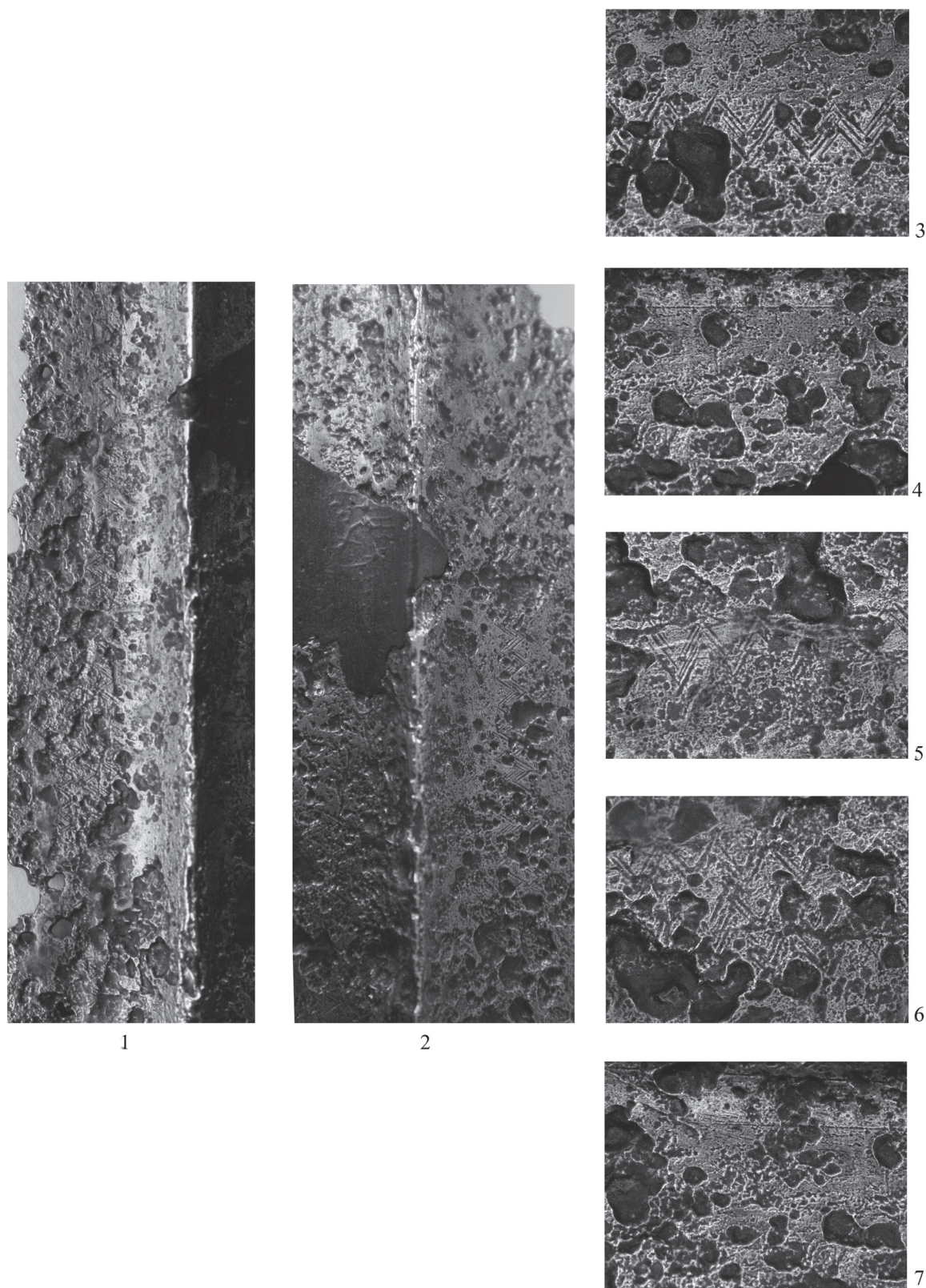


Fig. 4. The ornamentation on the head of the shafted weapon Type Vennolum/Ilkjær 15 from Szwajcaria, barrow 2, grave 1: 1, 2 images of both sides of the blade; 3-7 an electron microscope view; note the carved lines visible on pictures 4 and 7 (photograph by Bartosz Kontny).



## Head of a shafted weapon

The above elements correspond to Scandinavian finds, although not directly. Still, there is one item which is evidently of a Scandinavian character, which I would like to present in some detail. It is the head of a shafted weapon, recognised as a specimen of Type 15/Vennolum according to J. Ilkjær (Ilkjær 1990, p.387; von Carnap-Bornheim, Ilkjær 2001, pp.320, 477; Kontny 2007, pp.128-129, Fig. 8.b). After all, no one up till now has paid attention to the fact that some ornamentation has survived on it.<sup>14</sup> It is blurred by corrosion and conservation, but nevertheless it is undeniable. It was possible to study it thoroughly under an electron microscope.<sup>15</sup> Thus, we are dealing with a pattern of zigzag parallel lines engraved along the midrib (Fig. 4), in particular areas probably adjoining longitudinal grooves (Fig. 4.4, 7). Indeed, it is not noticeable on the whole surface, but originally it covered the whole blade on both its sides. That type of ornament is unquestionably of Scandinavian origin: in Balt lands (see Kontny 2007) and in the Przeworsk culture (see Kaczanowski 1988; Kontny 2004, pp.147-149, Figs. 6-7; Kontny 2008) so far such motifs and techniques were not spotted for the Younger and Late Roman Period. The area of Type Vennolum's appearance is limited to Scandinavia (Ilkjær 1990, Fig. 81), and the single items attributed to Przeworsk culture (Ilkjær 1990, table 63) find more demands of typology after P. Kaczanowski (1995).<sup>16</sup> Lanceheads of Vennolum type adorned with

<sup>14</sup> I owe this remark to Wiesława Gawrysiak-Leszczynska, who has drawn particular items from Szwajcaria, so I would like to express my gratitude to her.

<sup>15</sup> I would like to thank Anna Bitner-Wróblewska PhD, of the State Archaeological Museum in Warsaw, for allowing me to use the microscope.

<sup>16</sup> Taking into consideration their proportions, we may link them with Vennolum type, but they do not possess a narrowing in the point area characteristic of Type Vennolum, i.e., Domaradzice, Grave 135 (Kostrzewski 1954, Fig. 155.16), Młodzikowo, grave 135 (Dymaczewski 1958, Fig. 61:22), Krapkowice, grave 27 (Mączyńska 1971, Fig. 32), Serby (quoted as Lerchenberg), stray find (Tackenberg 1925, pl. 8.1). Other Scandinavian forms of heads of shafted weapons are very rare in the Przeworsk culture, and they are linked with the influences of the Wielbark culture (Biborski 2008), which was probably influenced by the Scandinavian model of weaponry, namely in the Younger and Late Roman Period (see, e.g., finds from Żarnowiec, Krokowa com., i.e., the head of the shafted weapon of Skiolum Type: Kontny 2006, p.146, Fig. 1.B, 2, with further literature, or the spearhead of Lundskin Type/Ilkjær 14 from Mława, Mława com., see Kaczanowski and Zaborowski 1988, p.230ff, Fig. 7). It seems that Scandinavian forms are also unique in the Balt milieu (see Kontny 2007, p.128; Yuganov 2007). I would like to thank Krzysztof Demidziuk MA for letting me study the materials from Serby collected in the City

a zigzag pattern were very frequently given with runic inscriptions,<sup>17</sup> generally engraved, but exceptionally even stamped (Stocklund 1986, pp.76, 86, Figs. 1-4). Unfortunately, despite careful study with a microscope, I have not spotted any signs of this. Nevertheless, the possibility is not ultimately excluded, as part of the blade was cut out and rejected for metallographic analysis in the 1950s (Piaskowski 1958, p.63ff, Fig. 1.3). Therefore, we can imagine that it also embraced a runic inscription, but it is equally probable that there was no inscription at all: the excised part was situated in the middle of the blade's length, but the runic script was frequently placed slightly below this level, at the widest part of the blade.

## Conclusions

The above observations show that there existed contacts between Scandinavian and Sudovian elites, although to account for their character we need further studies, the more so that there are also traits of the Przeworsk culture in the discussed grave, e.g., a sword of a type known mostly from the Przeworsk culture area (Biborski, Ilkjær 2006a, p.195, Fig. 131), or Przeworsk inspiration (although not making), as in the case of the second head of the shafted weapon from the princely grave at Szwajcaria (Kontny 2007, pp.125-126, Fig. 5). At the moment, I may only suggest that the man buried here was probably entangled in multi-ethnic enterprises during Phase C<sub>1b</sub>, maybe in the Scandinavian wars, documented by bog deposits from that age (see e.g. Ilkjær 1993, pp.375-386; Kaul 1997; Lund Hansen 2007).

## References

- ALMGREN, O., 1923. *Studien über nordeuropäischen Fibelformen der ersten nachchristlichen Jahrhunderte mit Berücksichtigung der provinzialrömischen und südrussischen Formen*. Mannus-Bibliothek. 32. Leipzig.
- ANTONIEWICZ, J., 1962. O kilku importach prowincjonalnorzymskich i kultury „wenedzkiej“ znalezionych na obszarze plemiennym Jaćwieży. *Rocznik Białostocki*, III, 184-204.
- ANTONIEWICZ, J., KACZYŃSKI, M.A., OKULICZ, J., 1958. Wyniki badań przeprowadzonych w 1956 roku na cmentarzysku kurhanowym w miejsc. Szwajcaria, pow. Suwałki. *Wiadomości Archeologiczne*, XXV, 22-57.
- ARRHENIUS, B., 1987. Skandinavien und Osteuropa in der Völkerwanderungszeit. In: G. BOTT, ed. *Germanen*, Museum in Wrocław, as well as Alicja Gałęzowska MA for her help in working with material from Młodzikowo and Domaradzice housed in the Archaeological Museum in Poznań.

<sup>17</sup> Personal communication from Professor Jørgen Ilkjær, for which I am very grateful.

- Hunnen und Awaren. Schätze der Völkerwanderungszeit.* Nürnberg, 441-467.
- BECKER, M. ed., 2010. *Das Fürstengrab von Gommern.* Veröffentlichungen des Landesamtes für Denkmalpflege und Archäologie Sachsen-Anhalt – Landesmuseum für Vorgeschichte, 63/I. Haale (Saale).
- BERNARD, P., ABDULLAEV, K., 1997. Nomady na granice Baktrii (k voprosu etnicheskoy i kul'turnoy identifikacii). *Sovetskaia Archeologiya*, 1997/1, 68-86.
- BIBORSKI, M., 2008. Groty typu skandynawskiego z cmentarzyska kultury przeworskiej z Mokrej, stan. 8, woj. śląskie. In: A. BITNER-WRÓBLEWSKA, G. IWANOWSKA, eds. *Baltowie i ich sąsiedzi. Marian Kaczyński in memoriam.* Warszawa, 687-693.
- BIBORSKI, M., ILKJÆR, J., 2006a. *Illerup Ådal 11. Die Schwerter. Textband.* Jutland Archaeological Society Publications, 25/11. Moesgård.
- BIBORSKI, M., ILKJÆR, J., 2006b. *Illerup Ådal 12. Die Schwerter. Katalog, Tafeln und Fundlisten.* Jutland Archaeological Society Publications. 25/12. Moesgård.
- BROSSEDER, U., MILLER, B.K., 2012. Reiterkrieger der Xiongnu. In: J. BEMMANN, ed. *Steppenkrieger. Reiternomaden des 7.–14. Jahrhunderts aus der Mongolei.* Darmstadt 2012, 115-125.
- von CARNAP-BORNHEIM, C., ILKJÆR, J., 1996. *Illerup Ådal. Die Prachtausrüstungen. Tafelband.* Jutland Archaeological Society Publications. 25/7. Højbjerg.
- COULSTON, J.C.N., 1985. Roman Archery Equipment. In: M. C. BISHOP, ed. *The Production and Distribution of Roman Military Equipment. Proceedings of the Second Roman Military Equipment Seminar.* BAR International Series. Oxford, 220-366.
- DAIM, F., 2003. Avars and Avar Archaeology. An Introduction. In: H.-W. GOETZ, J. JARNUT, W. POHL, eds. *Regna and gentes. The Relationship between Late Antique and Early Medieval Peoples and Kingdoms in the Transformation of the Roman World.* Leiden-Boston, 463-570.
- DIXON, K., SOUTHERN, P., 1992. *The Roman Cavalry from the First to the Third Century AD.* London.
- DYMACZEWSKI, A., 1958. Cmentarzysko z okresu rzymskiego w Młodzikowie pow. Środa. *Fontes Archaeologici Posnanienses*, VIII-IX, 179-442.
- ENGELHARDT, C., 1863. *Thorsbjerg Mosefund.* Kjöbenhavn.
- ENGELHARDT, C., 1865. *Nydam Mosefund 1859-1863.* Kjöbenhavn.
- ENGELHARDT, C., 1869. *Vimose Fundet.* Kjöbenhavn.
- GIESLER, U., 1978. Jüngerkaizerzeitliche Nietknopfsporen mit Dreipunkthalterung vom Typ Leuna. *Saalburg Jahrbuch*, XXXV, 5-56.
- GRYAZNOV, M.P., 1979. Taschtykskaya kul'tura. Sklep 1. In: M.P. GRYAZNOV, ed. *Kompleks archeologicheskich pamyatnikov u gory Tepsey na Enisee.* Novosibirsk, 90-104.
- HEYDECK, J., 1900. Eine Kultur- und Gräberstelle in Försterei Kl. Fliess, Kreis Labiau. *Sitzungsberichte der Altertumsgesellschaft Prussia*, 21, 57-60.
- HOLMQUIST, W., 1951. *Tauschierte Metallarbeiten des Nordens aus Römerzeit und Völkerwanderung.* Stockholm.
- ILKJÆR, J., 1990. *Illerup Ådal. I. Die Lanzen und Speere. Textband.* Jutland Archaeological Society Publications. 25/1. Aarhus.
- ILKJÆR, J., 1993. *Illerup Ådal 3. Die Gürtel. Bestandteile und Zubehör. Textband.* Jutland Archaeological Society Publications. 25/3. Aarhus.
- ISTVÁNOVITS, E., KULSCSÁR, V., 2001. Sarmatians through the eyes of strangers. The Sarmatian warrior. In: E. ISTVÁNOVITS, V. KULSCSÁR, eds. *International Connections of the Barbarians of the Carpathian Basin in the 1<sup>st</sup> – 5<sup>th</sup> Centuries A.D.* Aszód-Nyíregyháza, 139-169.
- ILYASOV, Y. YA., RUSANOV, D.V., 1998. A study on the bone plates from Orlat. *Silk Road Art and Archaeology*, 5/1997-1998, 107-159.
- JAHN, M., 1916. *Die Bewaffnung der Germanen in der älteren Eisenzeit, etwa von 700 v. Chr. bis 200 n. Chr.* Manus-Bibliothek. 16. Würzburg.
- KACZANOWSKI, P., 1988. Chronologia inkrustowanych grotów broni drzewcowej z okresu wpływów rzymskich z obszaru europejskiego Barbaricum. In: *Scripta Archaeologica. Uniwersytet Jagielloński Varia*, CCXXXI. Kraków, 51-75.
- KACZANOWSKI, P., 1992. *Importy broni rzymskiej na obszarze europejskiego Barbaricum.* Kraków.
- KACZANOWSKI, P., 1995. *Klasyfikacja grotów broni drzewcowej kultury przeworskiej z okresu rzymskiego.* Kraków.
- KACZANOWSKI, P., ZABOROWSKI, J., 1988. Bemerkungen über die Bewaffnung der Bevölkerung der Wielbark-Kultur. In: J. GURBA, A. KOKOWSKI, eds. *Kultura wielbarska w młodszym okresie rzymskim*, vol. II. Lublin, 221-239.
- KAUL, F., 1997. Priorsløkke and its logistic implications. In: A. NØRGÅRD JØRGENSEN, ed. *Military Aspects of Scandinavian Society in a European Perspective, AD 1-1300.* Copenhagen, 137-145.
- KHAZANOV, A.M., 1971. *Ocherki voennogo dela Sarmatov.* Moskva.
- KHUDYAKOV, YU. S., 1990. Obraz voina v taschtykskom izobrazitel'nom isskustve. In: *Semantika drevnikh obrazov.* Novosibirsk, 107-113.
- KONTNY, B., 2004. Uzbrojenie kultury przeworskiej w okresie wpływów rzymskich i początkach okresu wędrówek ludów. In: CH. LEIBER, J. ANDRZEJOWSKI, A. KOKOWSKI, eds. *Wandalowie. Strażnicy bursztynowego szlaku.* Lublin-Warszawa, 143-161.
- KONTNY, B., 2006. Powracający temat. Głos w sprawie odkrycia z Żarnowca. In: W. NOWAKOWSKI, ed. *Goci i ich sąsiedzi na Pomorzu.* Koszalin, 101-118.
- KONTNY, B., 2007. Foreign influences on the weaponry of Bogaczewo and Sudovian cultures. The case of the shafted weapon. *Archaeologia Baltica*, 8 (*Weapons, Weaponry and Man. In memoriam Vytautas Kazakevičius*), 117-132.
- KONTNY, B., 2008. Dawna technika na nowo odkryta – uwagi na marginesie znaleziska grotu z Łodzi-Łagiewnik. *Silesia Antiqua*, 44, 135-169.
- KOSTRZEWSKI, B., 1954. Cmentarzysko z okresu późno-lateńskiego i rzymskiego w Domaradzicach pow. Rawicz. *Fontes Archaeologici Posnanienses*, IV, 153-274.
- LUND HANSEN, U., 2007. Barbarians in the North – the Greatest Concentration of Roman Weaponry in Europe. In: T. GRANE, ed. *Beyond the Roman Frontier. Roman Influences on the Northern Barbaricum.* Rome, 105-130.
- MADYDA-LEGUTKO, R., 1986. *Die Gürtelschnallen der römischen Kaiserzeit und der frühen Völkerwanderungs-*

## II

SOCIETIES  
OF THE PAST:  
APPROACHES  
TO BURIAL  
CUSTOMS  
AND GRAVE  
GOODS

- zeit im mitteleuropäischen Barbaricum. BAR International Series. 360. Oxford.
- MADYDA-LEGUTKO, R., 2011. *Studium nad różnicowaniem metalowych części pasów w kulturze przeworskiej. Okucia końca pasa*. Kraków.
- MAĆZYŃSKA, M., 1971. Cmentarzysko i osada z okresu rzymskiego w Krapkowicach. *Materiały Starożytne i Wczesnośredniowieczne*, I, 251-316.
- MIKS, CH., 2007a. *Studien zur römischen Schwertbewaffnung in der Kaiserzeit. Text*. Kölner Studien zur Archäologie der römischen Provinzen. 8. Rahden/Westf.
- MIKS, CH., 2007b. *Studien zur römischen Schwertbewaffnung in der Kaiserzeit. Katalog und Tafeln*. Kölner Studien zur Archäologie der römischen Provinzen. 8. Rahden/Westf.
- NIKANOROV, V.P., KHUDYAKOV, YU. S., 2013. Izobrazheniya voinov iz orlatskogo mogil'nika. [http://www.sati.archaeology.nsc.ru/Home/pub/Data/?html=Nikan.htm&id=1063\\_11.02.2013](http://www.sati.archaeology.nsc.ru/Home/pub/Data/?html=Nikan.htm&id=1063_11.02.2013).
- NORBERG, R., 1931. Moor- und Depotfunde aus dem 5. Jahrhundert nach Chr. in Schonen. *Acta Archaeologica. København*, II/1, 104-111.
- NORDQUIST, B., 2007. Der Kriegsbeuteopferplatz von Finnestorp in Schweden. *Offa*, 61/62, 2004/05, 221-238.
- NOWAKOWSKI, W., 1994. Krieger ohne Schwerter – Die Bewaffnung der Aestii in der römischen Kaiserzeit. In: von C. CARNAP-BORNHEIM, ed. *Beiträge zu römischer und barbarischer Bewaffnung in den ersten vier nachchristlichen Jahrhunderten. Marburger Kolloquium 1994*. Marburg/Lublin, 379-391.
- NOWAKOWSKI, W. 2007. Aestiorum Gladii. Swords in the West Balt Circle in the Roman Period. *Archaeologia Baltica*, 8 (*Weapons, Weaponry and Man. In memoriam Vytautas Kazakevičius*), 85-94.
- PEŠKA, J., TEJRAL, J., ed., 2002. *Das Germanische Königsgrab von Mušov in Mähren*, Mainz.
- PUGACHENKOVA, G.A., 1989. Orlatskiy mogil'nik. In: G.A. PUGACHENKOVA, ed. *Drevnosti Miankalya. Iz rabot Uzbekistanskoy iskusstvovedcheskoy ekspeditsii*. Tashkent. 122-154.
- PIASKOWSKI, J., 1958. Badania metaloznawcze przedmiotów żelaznych z kurhanów z okresu rzymskiego we wsi Szawajcaria, pow. Suwalki. *Wiadomości Archeologiczne*, XXV, 58-71.
- PUZDROVSKII, A. E., 2007. *Krymskaya Skifiya II v. do n.e. – III v. n.e. Pogrebal'nye pamyatniki*. Simferopol'.
- RAU, A., 2007. *Remarks on Finds of Wooden Quivers from Nydam Mose, Southern Jutland, Denmark*. *Archaeologia Baltica*, 8 (*Weapons, Weaponry and Man. In memoriam Vytautas Kazakevičius*), 141-154.
- RIESCH, H., RUTSCHKE, J., STEHLI, U., 2012. Nachgebaut und Ausprobiert. Rekonstruktionen des Reflexbogens, der Pfeile und des Köchers aus den Žalgalant Chajrchan Bergen, Chovd aймаг, Mongolei. In: J. BEMMANN, ed. *Steppenkrieger. Reiternomaden des 7.–14. Jahrhunderts aus der Mongolei*. Darmstadt, 181-197.
- SIMONENKO, A., 2001. Bewaffnung und Kriegswesen der Sarmaten und der späten Skythen im nördlichen Schwarzmeergebiet. *Eurasia Antiqua*, 7, 187-327.
- SKVORCOV, K. N., 2012. Pogrebeniya z konyami I tys. n. e. na Sambiyskom Poluostrove (mogil'nik Aleyka 3). *Rossiyskaya Arkheologiya*, 2012/2, 159-172.
- STOCKLUND, M., 1986. Neue Runenfunde in Illerup und Vimose (Ostjütland und Fünen, Dänemark). *Germania*, 64/1, 75-89.
- TACKENBERG, K., 1925. *Die Wandalen in Niederschlesien*. Berlin.
- THOMAS, S., 1960. Studien zu den germanischen Kämmen der römischen Kaiserzeit. *Arbeits- und Forschungsberichte zur Sächsischen Bodendenkmalpflege*, 8, 54-215.
- YUGANOV, K.L., 2007. Redkie tipy nakonechnikov kopiy iz areala sambiysko-natangiyskoy kul'tury rimskogo vremeni. *Rossiyskaya Arkheologiya*, 2007/3, 76-80.
- ZIELING, N., 1989. *Studien zu germanischen Schilden der Spätlatène und der römischen Kaiserzeit im freien Germanien*. BAR International Series. 505. Oxford.
- ØRSNES, M., 1988. *Ejsbøl I. Waffenopferfunde des 4.-5. Jahrh. nach Chr.* Nordiske Fortidsminder. B 11. København.
- ØRSNES, M., 1993. Zaumzeugfunde des 1.-8. Jahrh. nach Chr. in Mittel- und Nordeuropa. *Acta Archaeologica. København*, 64, 183-292.

Received: 22 February 2012; Revised: 28 April 2013; Accepted: 26 August 2013.

Bartosz Kontny  
Institute of Archaeology, University of Warsaw  
Krakowskie Przedmieście 26/28  
00-927 Warsaw  
E-mail: bartosz.kontny@uw.edu.pl

## NAUJI PĖDSAKAI SENAME PILKAPYJE. YPATINGŲ RADINIŲ, RASTŲ SZWAJCARIA PILKAPYNE, PILKAPYJE 2, NAUJA INTERPRETACIJA (SUDŪVOS KULTŪRA)

### BARTOSZ KONTNY

#### Santrauka

Straipsnyje grįžtama prie gerai istoriografijoje žinomo garsaus didiko (princely grave) kapo iš Szawajcaria (Suwałkų apylinkės) pilkapyno (sūduvių kultūra) ypatingų radinių naujos interpretacijos (1 pav.). Be didiko, kape, pilkapyje 2, rasta žinomų radinių, analizuojamų pagal priimtas tipologines schemas. Tačiau šiame kape rastus įvairius metalinius apkalus autorius, remdamasis analogijomis, vienus mano esant balno apkalais, kitus priskiria odinei kibiro formos dėžutei, kuri greičiausiai buvo naudojama žirgo pakinktams sudėti (2, 3 pav.). Taip pat autorius analizavo ornamentą, išgraviruotą ant



ietigalio įmovos (Vennolum / Ilkjær 15 tipas) (5 pav.). Šių Szwajcaria didiko radinių analizė leidžia teigti, kad sūduvių ir skandinavų elitas palaikė ryšius. Tačiau norint šį teiginį pagrįsti, reikia atlikti daugiau tyrimų. Be to, minėtame kape rastas kalavijo tipas ir antrasis ietigalis (Kaczanowski XV tipas) rodo Przeworsko kultūros įtakos pėdsaką. Taigi šiuo metu galima konstatuoti, kad vyras, palaidotas Szwajcaria pilkapyne, 2 pilkapyje, galėjo būti susijęs su daugiaetnine C1b periodo kultūrine aplinka, galbūt net vadinamaisiais Skandinavijos karais. Pastaruosius ryšius atskleidžia gausūs depozitai Skandinavijos pelkėse.

Vertė Audronė Bliujienė

II

SOCIETIES  
OF THE PAST:  
APPROACHES  
TO BURIAL  
CUSTOMS  
AND GRAVE  
GOODS