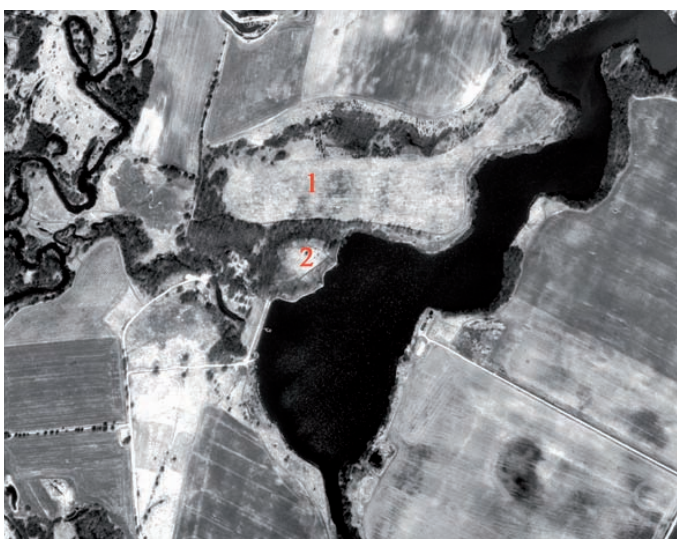




1



2



3

Plate I.

1 The Eketė locality, marked with a red dot; 2 Vertical photograph of Eketė from 1997: 1 settlement; 2 hill-fort; 3 Area of settlement within the red marked rectangle where the geophysical survey was conducted.

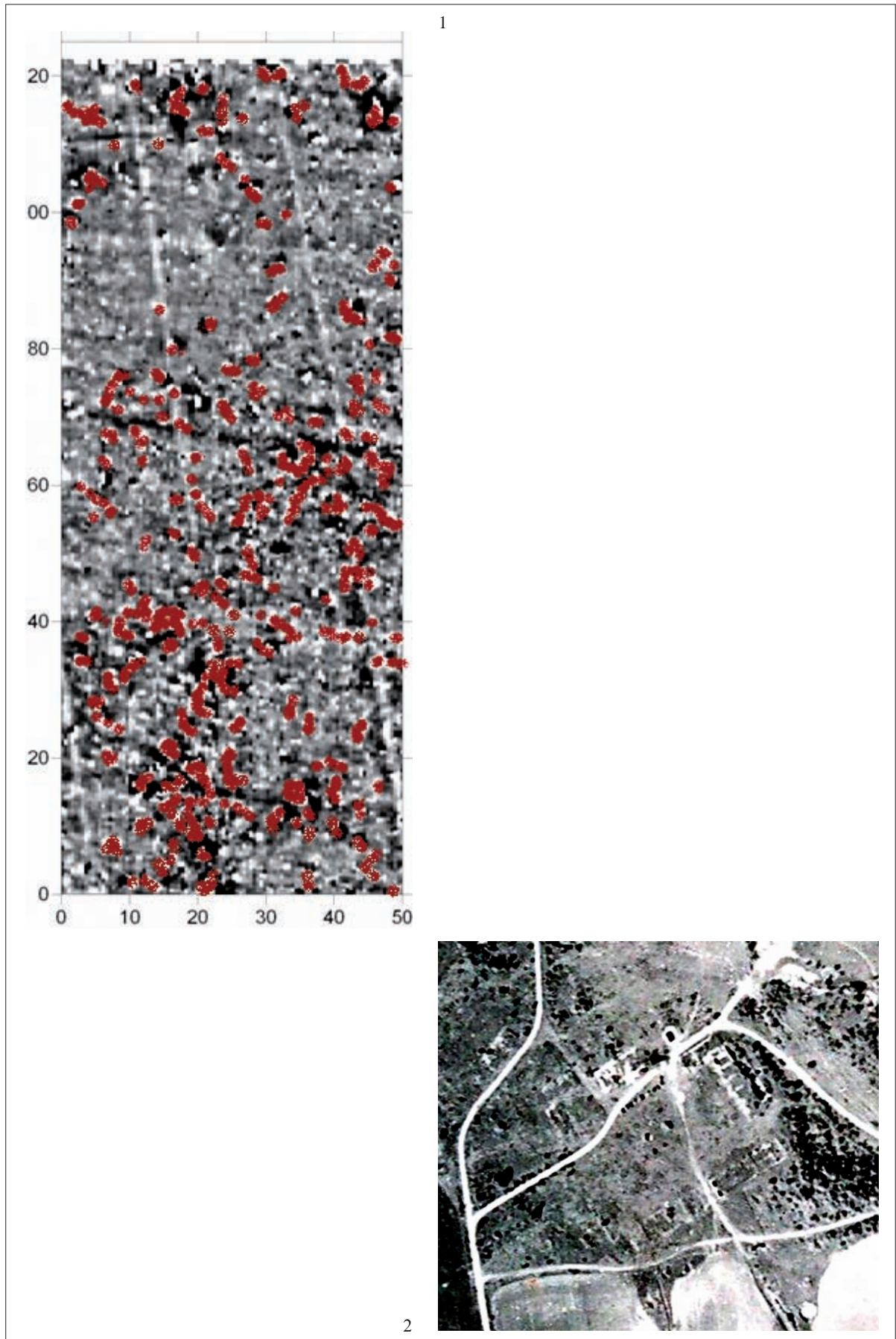


Plate II.

1 Image of magnetic anomalies obtained from the surveyed area of the settlement;

2 An enlarged detail of the archival vertical photograph of Eketè from 1958, with the manor's remains.



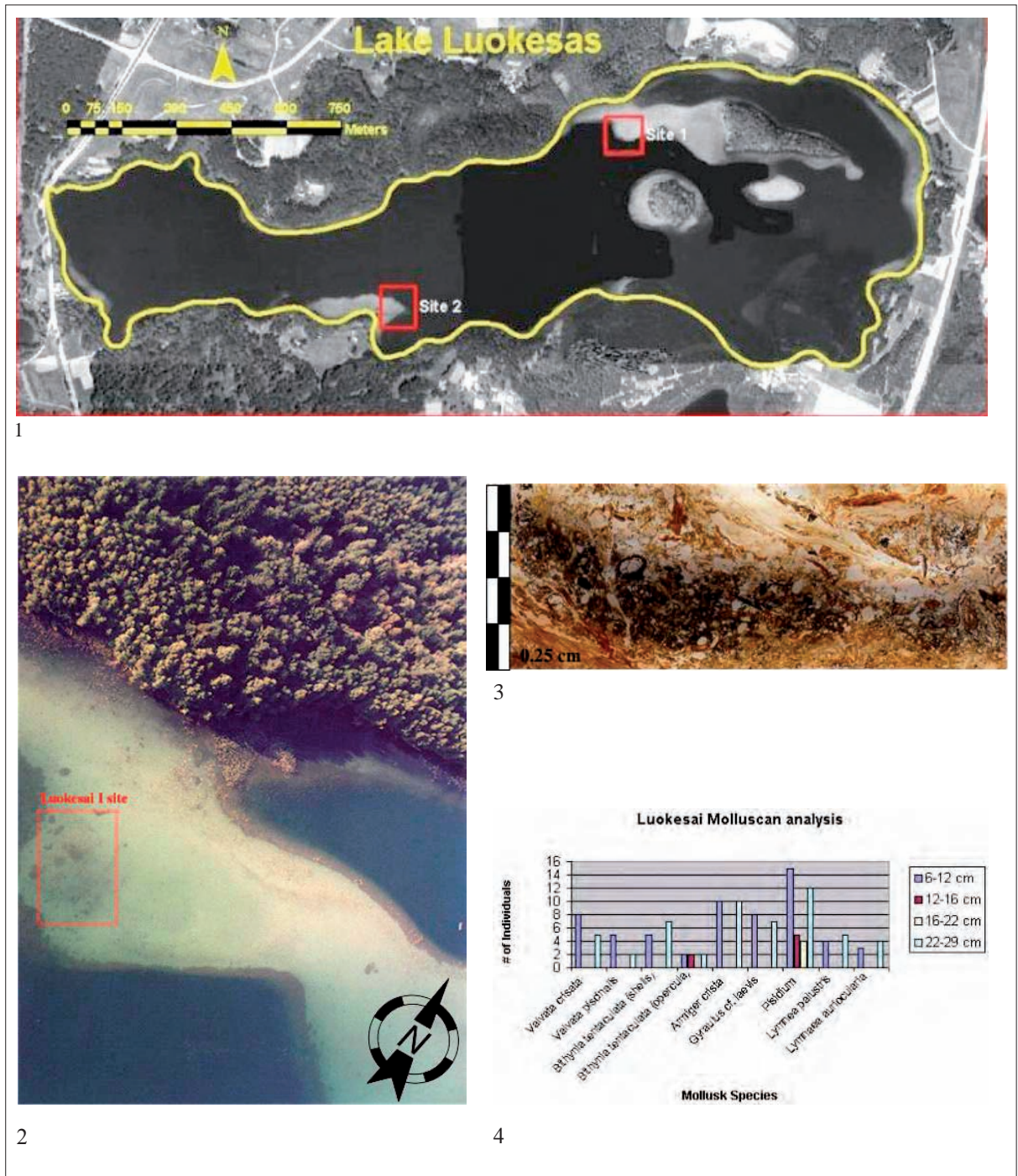


Plate IV.

1 Lake Luokesas and the two lake-dwelling sites (base map obtained from the ortho-rectified aerial photograph from the Lithuanian geological survey database/archive 1990); 2 The shoal of the Luokesai I settlement. The square on the picture indicates the site (after Giedrė Motuzaitė-Matuzevičiūtė); 3 The layer of ash found in the LI(B) profile at 22 to 22.5 cm depth shows *in situ* burning of organic material (after Giedrė Motuzaitė-Matuzevičiūtė); 4 Mollusk species found in Luokesai I(B) stratigraphy.



1



2



3

Plate V.

1 Traces of land improvement ditches in fields (2 April 2007) (photograph by G. Zabiela); 2. Former meadow areas in fields in central Lithuania (6 April 2007) (photograph by G. Zabiela); 3 The feature at Mikyčiai from the air (viewed from the north) (photograph by Z. Baubonis).



1



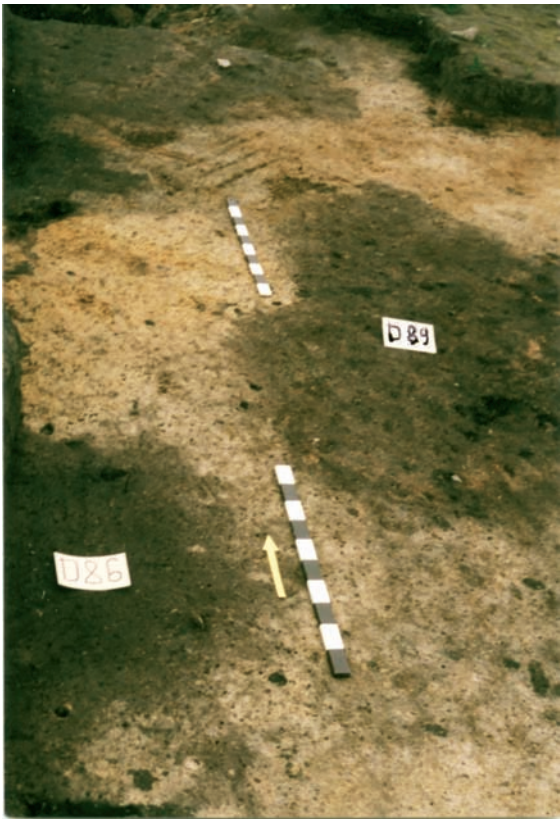
2

Plate VI.

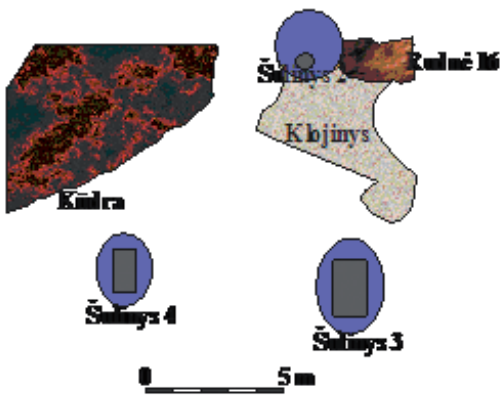
- 1 The feature at Eglynai from the air (viewed from the south, 26 April 2007) (photograph by G. Zabiela);
- 2 The feature at Eglynai from the north (26 April 2007) (photograph by G. Zabiela).



1



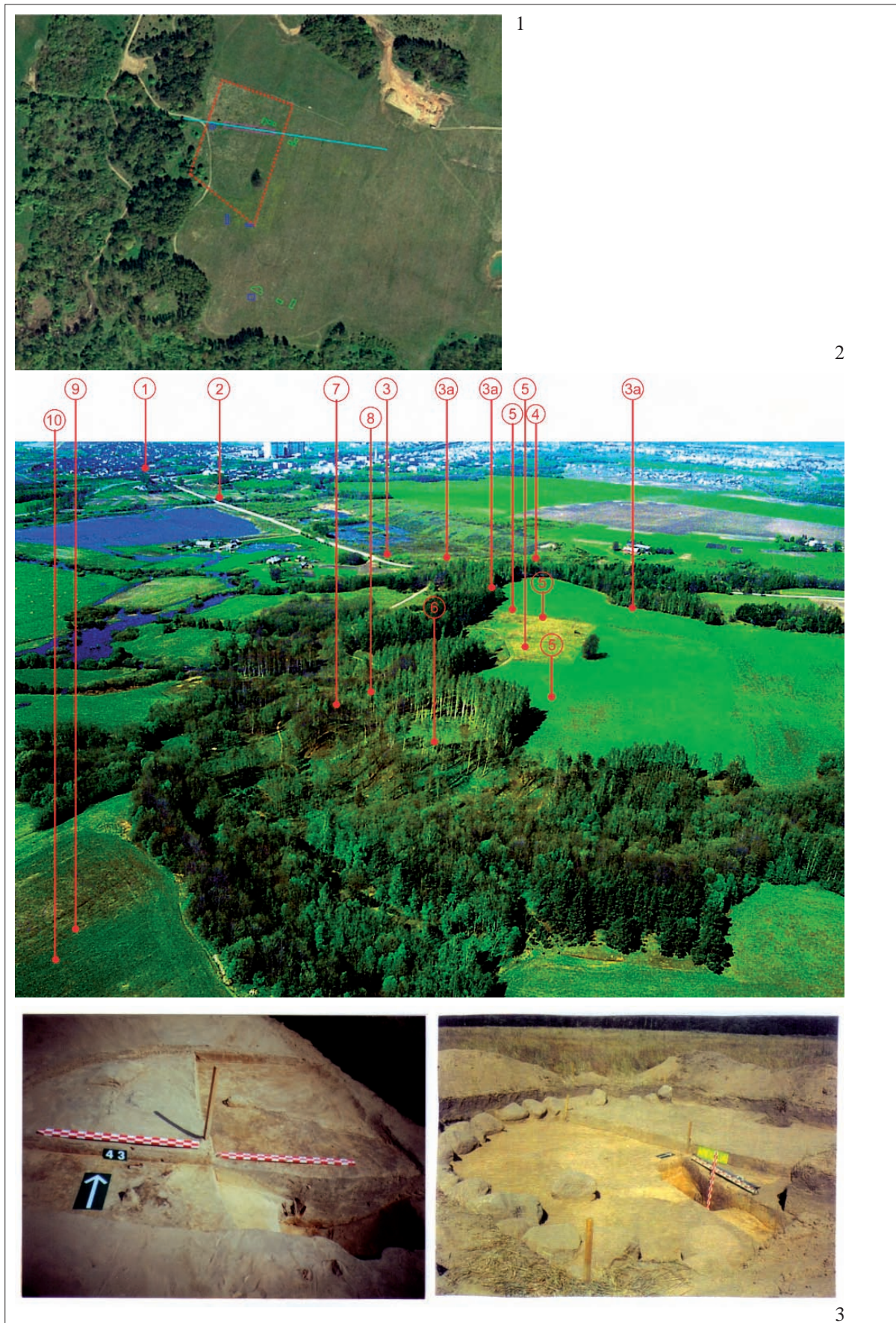
2



3

Plate VII.

1 The remnants of ore washing flooring at Lieporiai; 2 Ore mining pit at Lieporiai; 3 The scheme of iron ore washing equipment at Lieporiai.



2

3

Plate VIII.

2 The Ēglišķiai-Anduliai cemetery: location of all excavations and plots, and the area protected by law (after V. Vaitkevičius and I. Žikulinas); 2 Ēglišķiai-Anduliai cemetery and the sites in its closest vicinity: 1 Šlikiai barrows; 2 Šlažiai barrows; 3, 3a Ēglišķiai barrows; 4 settlement (traces); 5 Ēglišķiai-Anduliai cemetery; 6 Anduliai hill-fort; 7 Alkakalanis, a sacred hill; 8 the Evangelical Lutheran burial ground of Ēglišķiai village; 9, 10 Valēnai (Cartai) settlements; 3 Male grave 43 and horse grave 1 found in the Ēglišķiai-Anduliai cemetery in 2002 (photograph by A. Lūža).