

Plate I

IMMO HESKE

RITUAL KNOWLEDGE: THE PRODUCTION, DISTRIBUTION AND DEPOSITION OF LATE BRONZE AGE HANGING VESSELS

1 Geophysical prospecting south of Hünenburg near Watenstedt, with a concentration of ritual activities and the old creek (graphics by H. Marx); 2 the Watenstedt I hoard hanging vessel with its casting mould (photograph by H. Marx).



Plate II

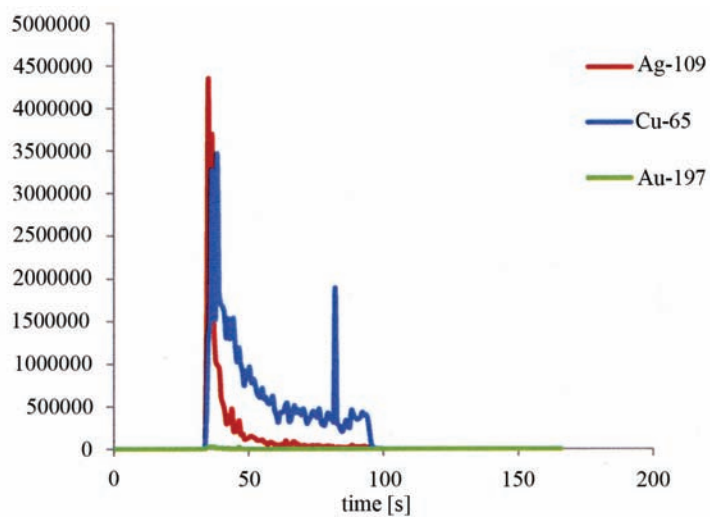
CHRISTOPH G. SCHMIDT

JUST RECYCLED? A NEW LIGHT ON ROMAN IMPORTS IN CENTRAL GERMANY ACCORDING TO THE 'CENTRAL LITTLE FARMSTEAD' OF FRIENSTEDT, THURINGIA'

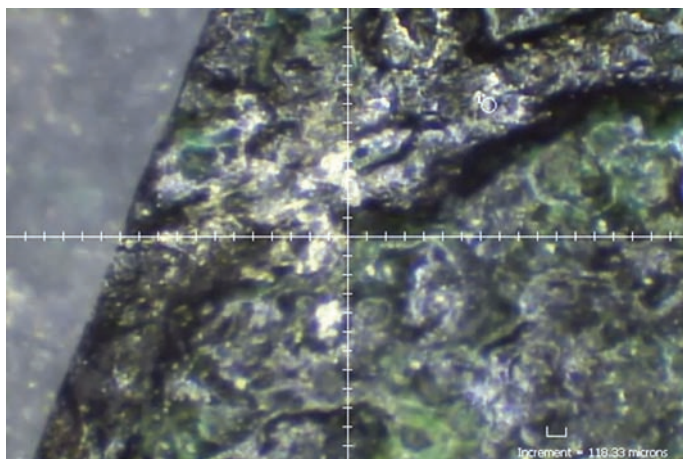
1 A section of one of the so-called offering shafts (photograph by Peter-Michael Sukalla, TLDA); 2 a cattle skull deposited in one of the shafts (photograph by Peter-Michael Sukalla, TLDA); 3 a clay puppet with needle holes, which has its nearest parallels in a Roman context, probably an imported object, but no raw material at all (photograph by the author); 4 the main grave formed as a chamber with steps on one side, repeating on a smaller scale the princess' grave at Haßleben, only 15 kilometres away (photograph by Peter-Michael Sukalla, TLDA); 5 the grave goods of the main grave were sparse, but they contained signs of a high social status, like a fibula and arrowheads made of silver, a gold finger-ring, and a Roman aureus as an *obolus* placed in the mouth (photograph by Brigitte Stefan, TLDA).



1



2a



2b

Plate III

KATARZYNA CZARNECKA

A PARADE SHIELD FROM THE PRZEWORSK CULTURE CEMETERY IN CZERSK, NEAR WARSAW, POLAND: AN INTERNATIONAL SIGN OF STATUS IN THE EARLY ROMAN PERIOD

1 Czersk, Piaseczno district, grave 93: shield grip, before restoration (photograph by A. Wiśniewska); 2a-2b: 2a the preliminary results of the time-intensity correlation of registered chosen isotope signals from micro-sampling on the rivet plate; 2b the site of the micro-sampling (photograph by E. Miśta).

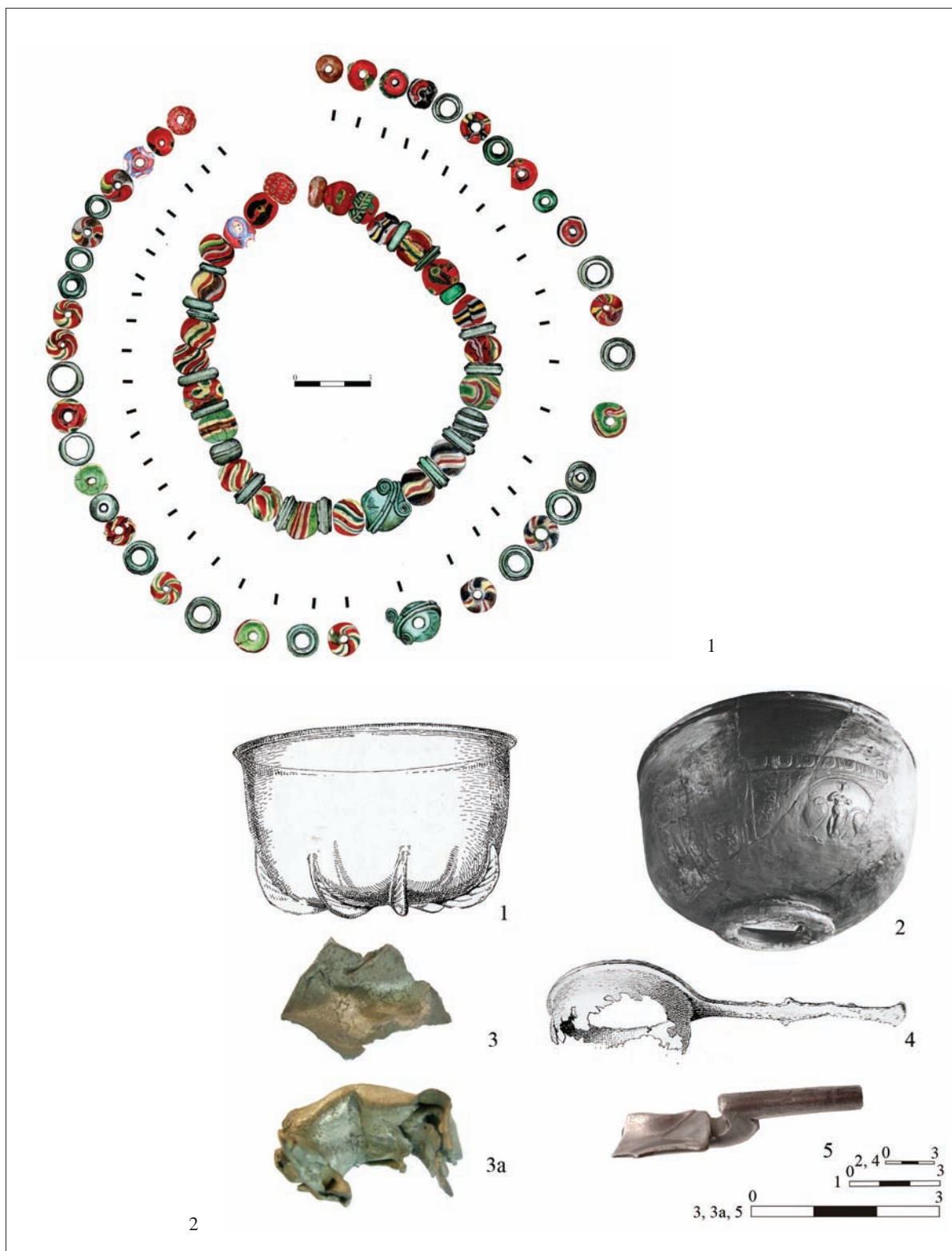


Plate IV

KONSTANTIN N. SKVORTSOV

THE FORMATION OF A SAMBIAN-NATANGIAN CULTURE PATRIMONIAL ELITE IN THE ROMAN PERIOD IN THE CONTEXT OF THE AMBER TRADE

1 Necklace of mosaic glass and bronze beads from inhumation burial 216, Lauth burial ground (after Skvortsov 2004, Fig. 100); 2 Roman tableware from Sambian-Natangian burial grounds: 2.1 Warengen, Kr. Fischhausen (Zelenogradsk district) (after Gaerte 1929, p.211, Fig. 159.f); 2.2 Klein Fließ, Kr. Labiau (Izobil'noe, Polesk district) (after Grenz' archive); 2.3-3a Partheinen, Kr. Heiligenbeil (Moskovskoe-1, Bagrationovsk district), burial 6 (after Golubev 2010); 3.4 Kirpehnen, Kr. Fischhausen (Povarovka, Zelenogradsk district) (after Gaerte 1929, p.211, Fig. 159.c); 5 Jugehnen, Kr. Fischhausen (Aleika-3, Zelenogradsk district) (after Hohlov 2010, p.73). All the sites are in the Kaliningrad region of Russia.



Plate V

KONSTANTIN N. SKVORTSOV

THE FORMATION OF A SAMBIAN-NATANGIAN CULTURE PATRIMONIAL ELITE IN THE ROMAN PERIOD IN THE CONTEXT OF THE AMBER TRADE

1a Finds from burials related to the fourth level: silver bracelet (type Wójcik V) grave 98; 1b silver fibula with gilding (type A217) grave 177 from Grebieten, Kr. Fischhausen (after Bujack 1888, Plate V. 1a, b); 1c Brandenburg, Kr. Heiligenbeil (Ushakovo, Gur'evsk district): silver rosette-like fibula with gilding and bronze details (sixth group of U. Lund Hansen) 1d gold pendant made of Emperor Victorinus aureus (268–270 AD); 2a-g finds from Klein Medenau, Kr. Fischhausen (Logvinovo, Zelenogradsk district), grave 12; 2h-n finds from Jugehnen, Kr. Fischhausen (Aleika-3, Zelenogradsk district) (after K.N. Skvortsov).

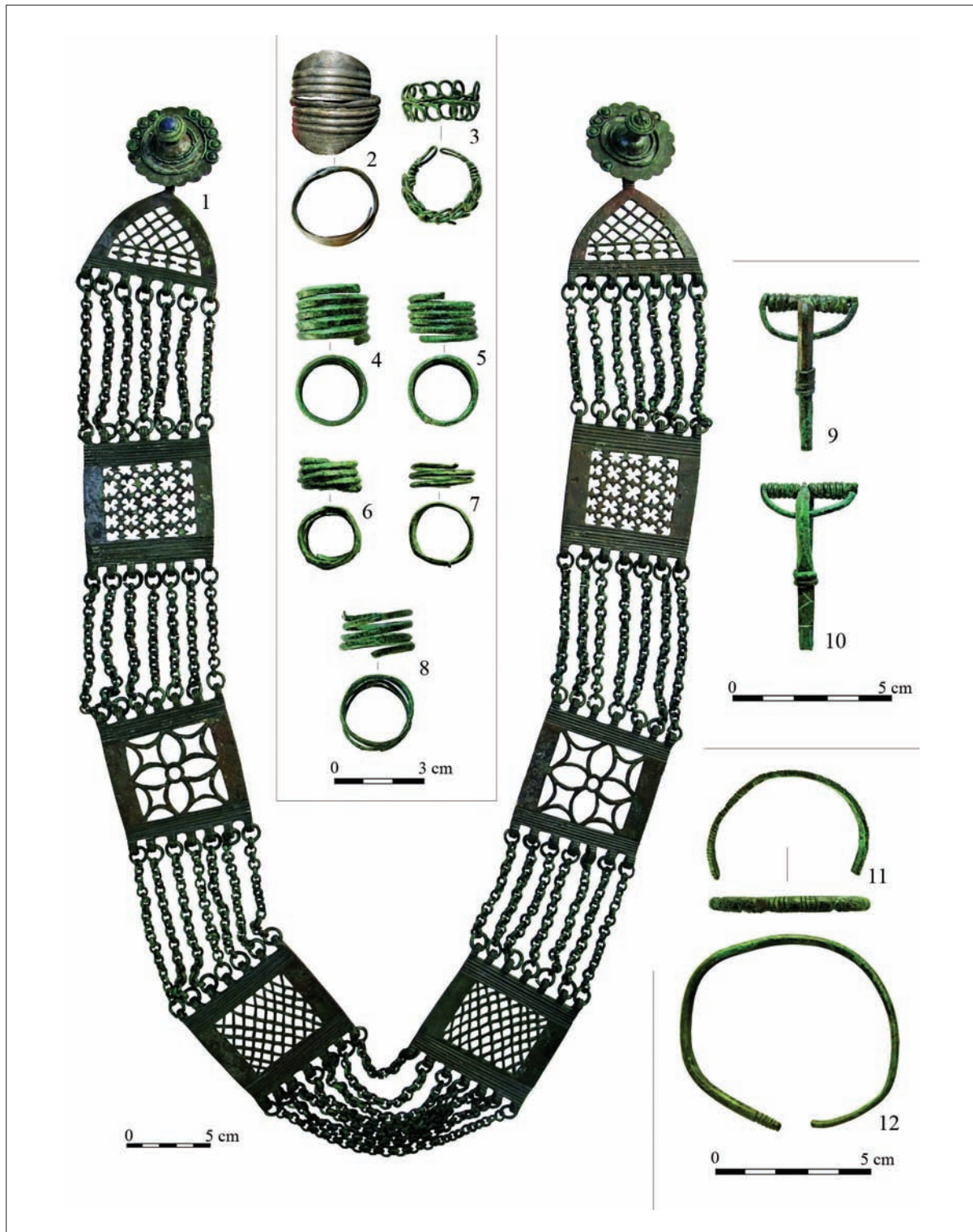


Plate VI
 RASA BANYTĖ-ROWELL, ANNA BITNER-WRÓBLEWSKA,
 CHRISTINE REICH

DID THEY EXIST? THE QUESTION OF ELITES IN WESTERN LITHUANIA IN THE ROMAN AND EARLY
 MIGRATION PERIODS, AND THEIR INTERREGIONAL CONTACTS

Grave goods from Bandužiai, grave 74: 1 pectoral ornament with a pair of tutulus pins with tin coating and blue glass; 2-8 finger-rings; 9, 10 crossbow brooches; 11, 12 bracelets (1 bronze, tin coating, blue glass; 2 silver; 3-12 bronze) (photographs by Jolanta Mažeikaitė).



1



2.1



2.2



3



4

Plate VII

RYTIS JONAITIS

CIVITAS RUTENICA IN EARLY VILNIUS IN THE 14TH AND 15TH CENTURIES.

THE SOCIO-CULTURAL ASPECT

1 graves 334 and 336, seen from the north; 2.1 grave 226, seen from the north; 2.2 grave 225, seen from the east; 3 grave 270, seen from the northwest; 4 burials 303 and 307, seen from the east (photographs by R. Jonaitis).



Plate VIII

RYTIS JONAITIS

CIVITAS RUTENICA IN EARLY VILNIUS IN THE 14TH AND 15TH CENTURIES.

THE SOCIO-CULTURAL ASPECT

Finger-rings: 1 grave 106; 2 grave 93; 3 grave 176; 4-5 grave 21; 6-7 grave 58; 8 grave 6 (photographs 1, 3-7 by A. Blažys, 2 by A. Baltėnas, 8 by I. Kaplūnaitė).