



Fig. 3.



Fig. 4.



Fig. 5.



Fig. 6

Plate I

TIINA ÄIKÄS

FROM FELL TOPS TO STANDING STONES: SACRED LANDSCAPES IN NORTHERN FINLAND

Fig. 3. The island of Ukko in Inari (photograph by the author).

Fig. 4. A *sieidi* stone on the island of Ukko (photograph by the author).

Fig. 5. The island of Ukonsaari in Inari (photograph by the author).

Fig. 6. A fish pillar at Sorsaniemi, Kemijärvi (photograph by the author).

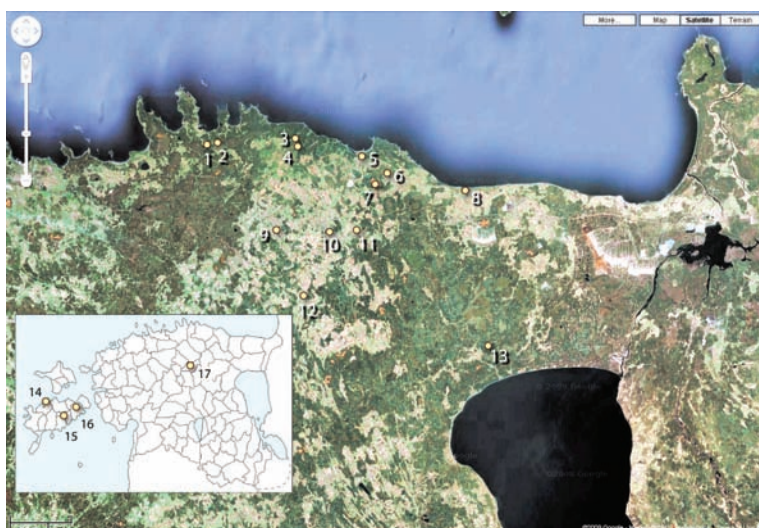


Fig. 1



Fig. 2.



Fig. 3.

Plate II

TÕNNO JONUKS**HIIS-SITES IN NORTHERN ESTONIA: DISTINCTIVE HILLS AND PLAIN FIELDS**

Fig. 1. A map of Estonia and the study area. Places mentioned: 1 Tõugu Hiieväli (*hiis*-field); 2 Tõugu grave field; 3 Karula *hiis*; 4 Karula grave field; 5 Kunda *hiis*-hill; 6 Kongla; 7 Varudi; 8 Purtse; 9 Kadrina church; 10 Tõrma; 11 *Hiis* of Vaeküla, Raudvere and Raudlepa villages; 12 Aburi; 13 Roostoja Iissaar (*hiis*-island); 14 Panga cliff; 15 Valjala church; 16 Põide church; 17 Järva-Jaani church.

Fig. 2. A map of the Purtse area. A group of stone graves is marked (1–6), together with the Uku spring (7). There is a clint outcrop marked on the northern side of the *hiis*-hill facing towards the sea.

Fig. 3. A map of the Kunda area. Stone graves (1–4) on the northeast part of the *hiis*-hill, an offering spring (5), and a contemporary settlement site (6) are marked. It is possible that a path on the former lake shore, now leading north from the village, could also have been a connecting route during the time the stone graves were built on the hill.



Fig. 1.



Fig. 3



Fig. 4



Fig. 5

Plate III

JURIS URTĀNS

THE MYTHICAL FLIGHT PATHS OF LAKE SAUKA

Fig. 1. Lake Sauka: a general view.

Fig. 3. The mythological place of origin of Lake Sauka at the Strubenči swamp.

Fig. 4. Sausnēja Piķapurvs.

Fig. 5. Dead trees emerging from the bottom of Lake Sauka.



Fig. 1



Fig. 2.



Fig. 3

Plate IV

JANIS CEPITIS, LILIJA JAKUBENOKA

MYTHICAL CREATURES, THE MAKING OF WEARING APPAREL, AND THE LANDSCAPE

Fig. 1. The tailor-stone in the River Kuja (photograph by L. Jakubenoka).

Fig. 2. The Valģu devil-stone (photograph by L. Jakubenoka).

Fig. 3. The tailor-stone by the River Sesava (photograph by L. Jakubenoka).

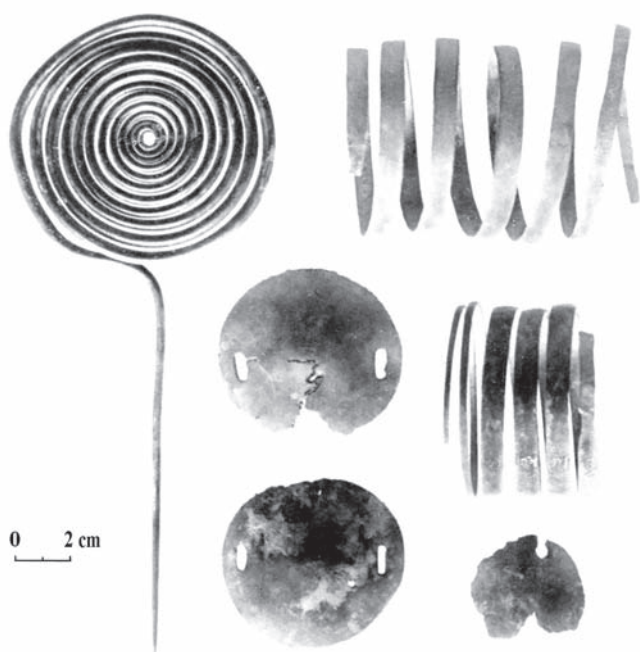


Fig. 3A



Fig. 3B

Plate V

VYKINTAS VAITKEVIČIUS

ANCIENT SACRED PLACES IN LITHUANIA: CROSSROADS OF GEOGRAPHY, ARCHAEOLOGY AND FOLKORE

Fig. 3. (A) The Baudėjos hoard, Prienai district, dating from the Bronze Age. A set of artefacts (a crescent-shaped pendant and three unidentified items are missing from the photograph) was found when digging a pool in 1936 (according to Puzinas 1938, Fig. 21); (B) the site where the Baudėjos hoard was found, looking from the south (photographed by the author in 2008).



Fig. 4.



Fig. 6

Plate VI

VYKINTAS VAITKEVIČIUS**ANCIENT SACRED PLACES IN LITHUANIA: CROSSROADS OF GEOGRAPHY, ARCHAEOLOGY AND FOLKLORE**

Fig. 4. Stone head-shaped figurines stored in Trakai History Museum (A981, A982). The figurines were found by Kazimieras Kulakas in Lake Galvė in 1923: he discovered artefacts while sailing on a boat in the area of a shoal between Pilis and Pirtis islands; transferred to the museum in 1977 (photograph by the author).

Fig. 6. The Vaikučiai stone, Švenčionys district. It used to serve as a table in the course of the communal feast of Kupolės every year in the period from May to June; it is now removed from its original place (photographed by the author in 1998).



Fig. 3



Fig. 4

Fig. 5



Plate VII

ULADZIMER LOBACH

THE SACRED LAKES OF THE DVINA REGION (NORTHWEST BELARUS)

Fig. 3. A lake called Sacred next to the village of Borovyie in the Chashniki district (photograph by the author).

Fig. 4. A lake called Sacred next to the village of Mikulino in the Polotsk district (photograph by the author).

Fig. 5. A lake called Sacred next to the village of Slobodka in the Chashniki district (photograph by the author).



Fig. 1



Fig. 2

Fig. 3



Plate VIII

DAIVA VAITKEVIČIENĖ**LIBATION IN BALTIC RELIGIOUS PRACTICES**

Fig. 1. The stone with a trough-shaped hollow on its top in Antakmenė (near Kazitiškis in the Ignalina district) (photograph by D. Vaitkevičienė, 2009).

Fig. 2. The stone at Laukagalys (in the Kaišiadorys district) with chutes running in the direction of two separate fireplaces (photograph by D. Vaitkevičienė, 2011).

Fig. 3. The chutes on the Laukagalys stone (photograph by D. Vaitkevičienė, 2011).